

# Make Your **Mark** On the **Park**



Provide Your Ideas  
for the Future

## **Lewisburg Parks & Bull Run Greenway**

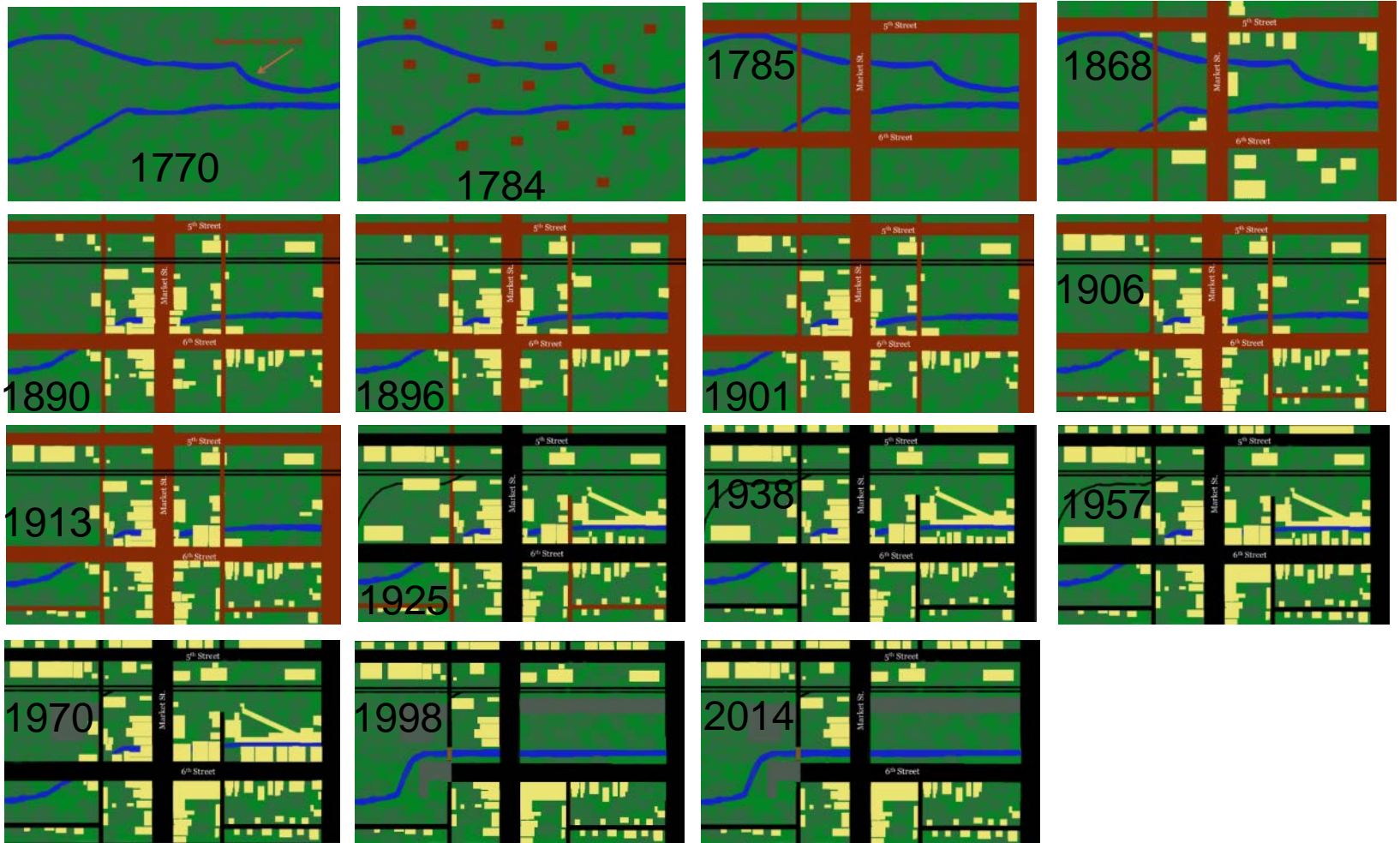
### **Community Design Workshop**



VIS

EY

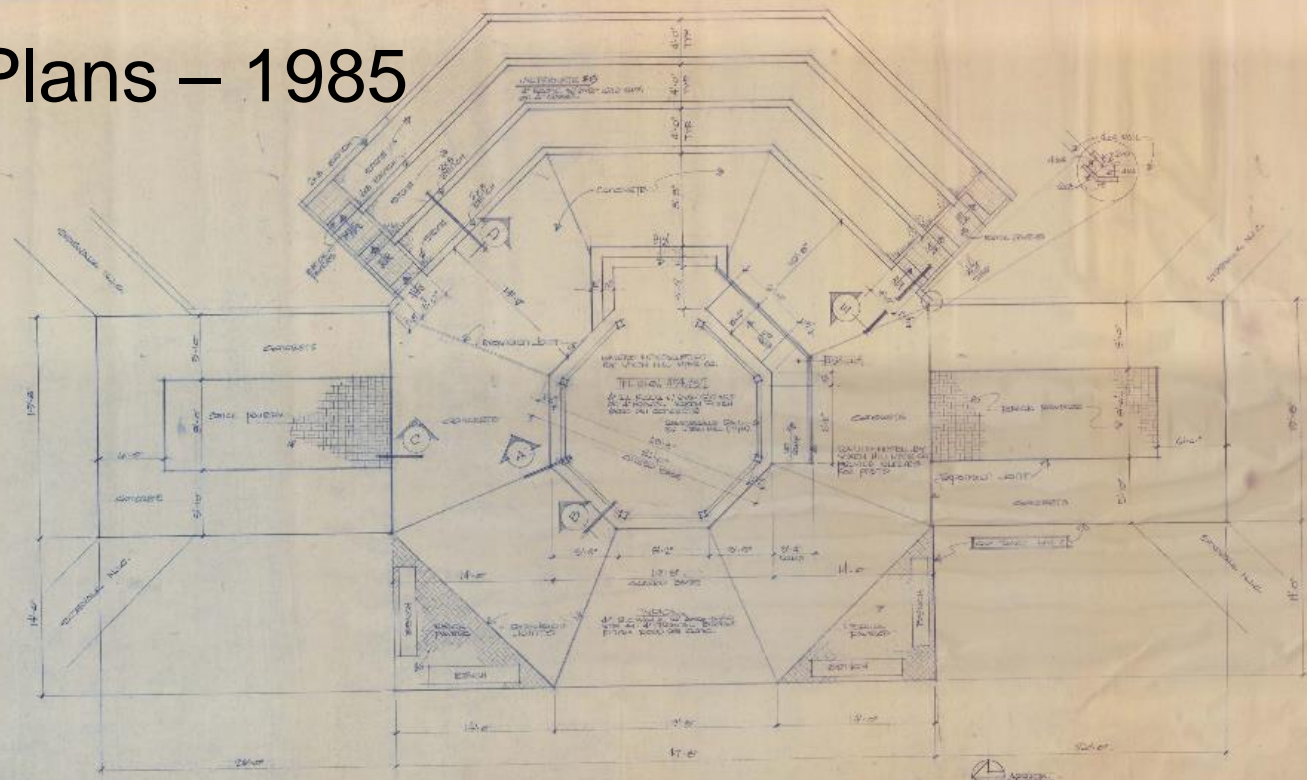
# History of Bull Run Corridor



Limestone Run (Bull Run) Stream Restoration. Bucknell University Class Project, 2014. Kabis, Miller and Sisto.



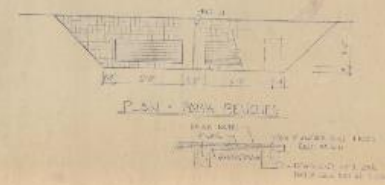
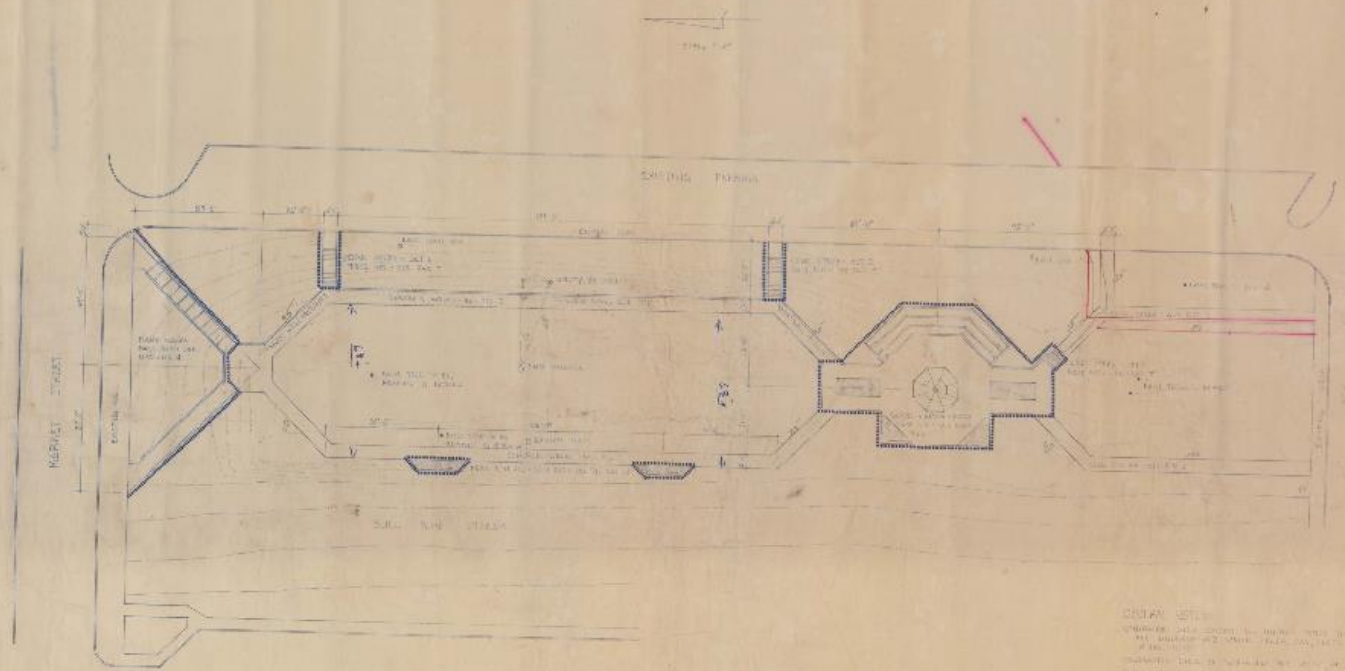
# Park Plans – 1985



PLAN AT GAZEBO + AMPHITHEATER  
SCALE: 1/4" = 1'-0"

<b>JOHN C. ORR &amp; ASSOCIATES</b> LANDSCAPE ARCHITECTS MILLERSBURG, PENNSYLVANIA	
<b>6</b>	PLAN - GAZEBO + AMPHITHEATER HUNTSVILLE PARK BOROUGH OF LEWISBURG
DATE: 11/85	

# Park Plans – 1985



**GENERAL NOTES:**

1. ALL DIMENSIONS ARE IN FEET AND INCHES.

2. ALL DIMENSIONS ARE TO FACE UNLESS OTHERWISE NOTED.

3. ALL DIMENSIONS ARE TO FACE UNLESS OTHERWISE NOTED.

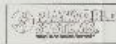
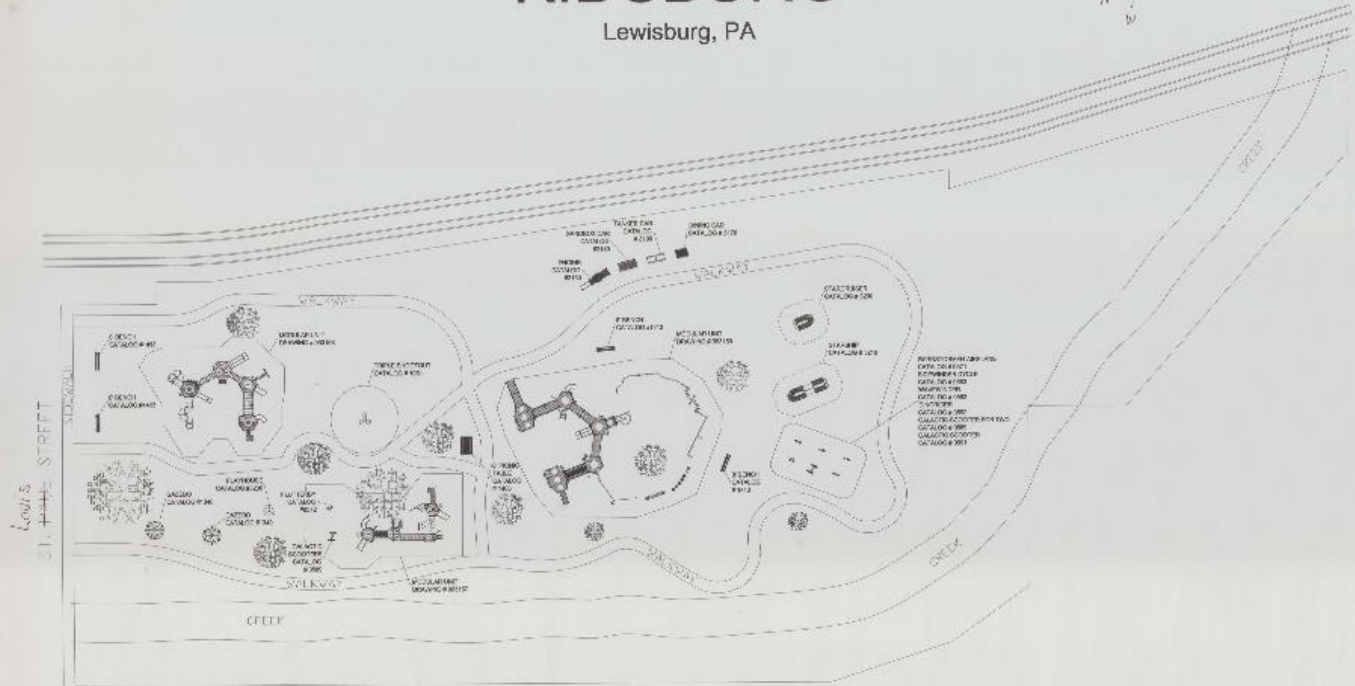
4. ALL DIMENSIONS ARE TO FACE UNLESS OTHERWISE NOTED.

5. ALL DIMENSIONS ARE TO FACE UNLESS OTHERWISE NOTED.

<b>JOHN C. ORR &amp; ASSOCIATES</b> LANDSCAPE ARCHITECTS MILLERSBURG, PENNSYLVANIA	
<b>1</b> SITE LAYOUT PLAN BUTTSVILLE TOWNSHIP BOROUGHS OF LEWISBURG	

# Park Plans – 1999 KIDSBURG

Lewisburg, PA



Project: KIDSBURG  
 1000 S. SILKSWAY  
 LEWISBURG, PA  
 17033

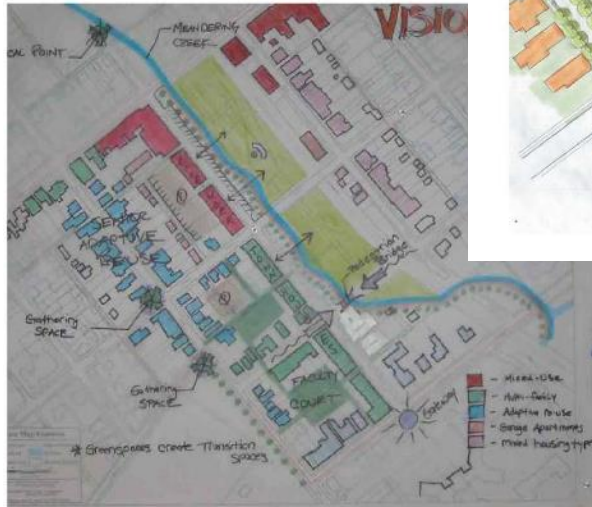
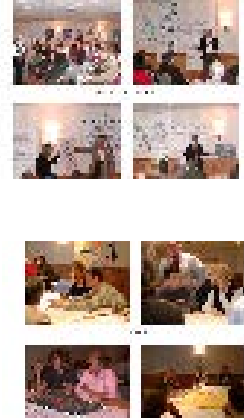
SCALE: 1" = 20'-0"  
 DATE: 11-1-99  
 DRAWN BY: [Name]

DATE: 11-1-99  
 CHECKED BY: [Name]

Site Plan

# The Lewisburg Neighborhood Project

## 2003 - 2004



# Town – Campus Connection





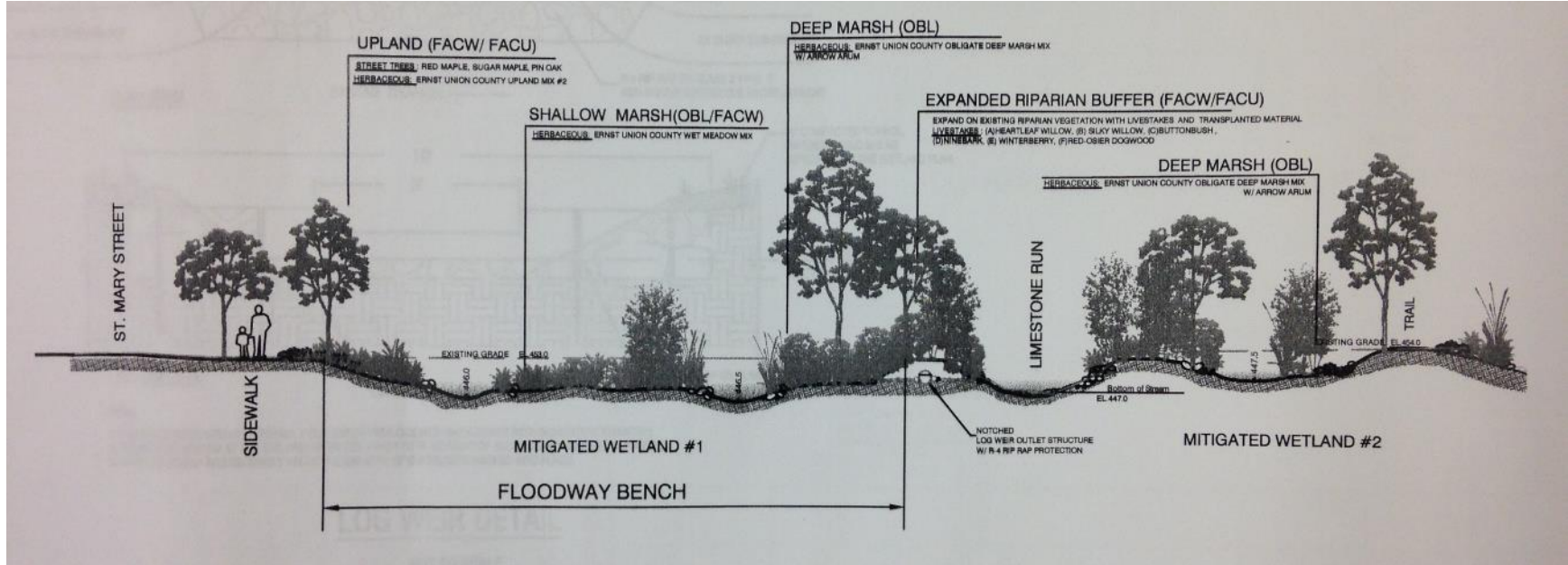
# Town – Campus Connection



# Buffalo Valley Rail Trail Extension



# The Giant Wetland



# Challenges – Flooding, Loss of HS, Move BU Students, Loss of Downtown Businesses

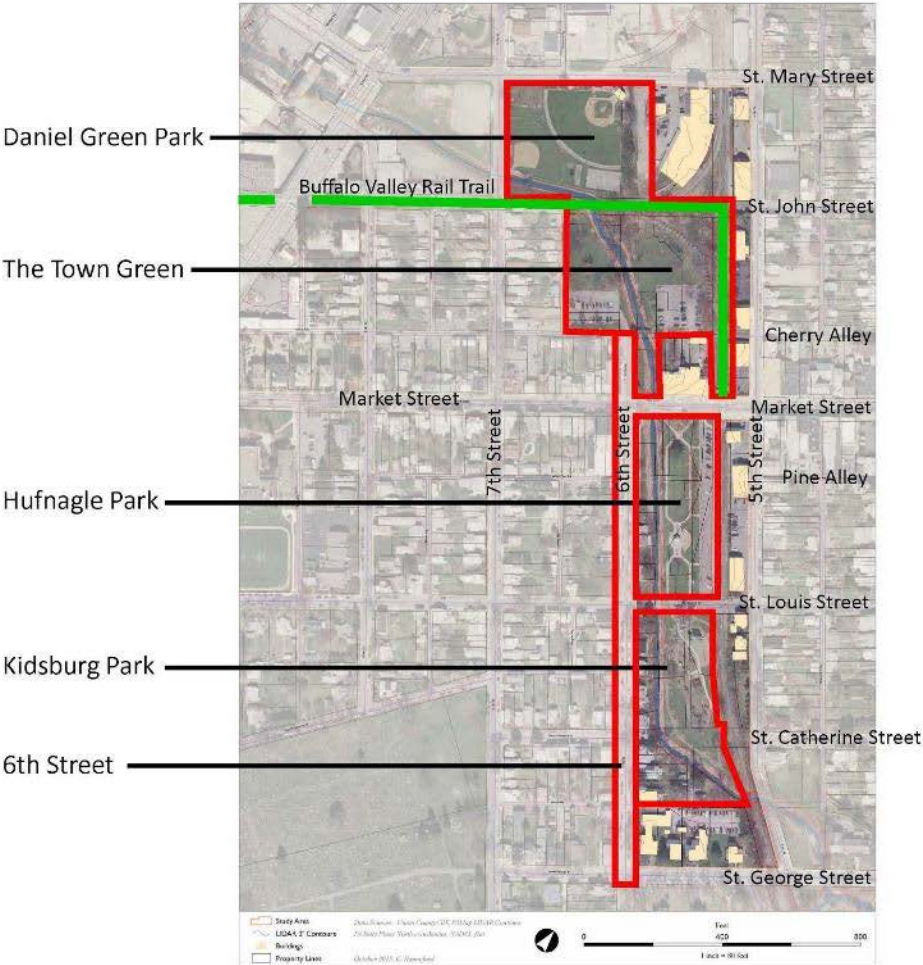


# Make Your Mark on the Park



Aerial Photo by Ben Hayes, Bucknell Center for Sustainability and the Environment, 2014

# Study Area



# Community Design Workshop



## Charrette –



a meeting held early in the design process in which the design team and community stakeholders are brought together to develop goals, strategies and ideas for maximizing the performance of the project.



# Community Design Workshop

## Goals:



Analyze the Situation –  
What Does NOT Work

Set Goals &  
Formulate a Vision for the Future

Generate Ideas, Options, Strategies –  
Create a Concept Plan and Image Collage



# Community Design Workshop

Your Facilitators....



Sarajane Snyder – Being Green

Justin Spangler – We Need To Talk (Bull Run)

Glenn Vernon – Entertain Us

Kim Wheeler – Creating Connections

Alice Trowbridge – Future of Recreation

Dina El Mogazi – People Places

# Community Design Workshop

## Co-Facilitators

Chris Gourd— We Need To Talk (Bull Run)

Melissa McCarter – Creating Connections

Dan McCall – Future of Recreation

Mary Brigid Coughlin – People Places

Sue Auman – Entertain Us



# Community Design Workshop

## Visual Assessment & Survey

Mary Brigid Coughlin

Chris Gourd

Dan McCall

Melissa McCarter



# We Need To Talk.....

## Redefining our Relationship with Bull Run

### What's There Now?



Engineered /  
Armored

### What should it look like in the future?

Natural /  
Green



# Future of Recreation - Check Your Favorites



Movies In The Park



Ping-Pong Table



Bocce



Shuffleboard



Frisbee Golf



Game Tables

# Community Design Workshop

Kids' Design Table

**NO PARENTS ALLOWED**

Ruby Auman

Alyssa Brown

Olivia Martin



# Community Design Workshop

Kids' Design Table

**NO PARENTS ALLOWED**



Ruby Auman  
Alyssa Brown  
Olivia Martin



# Community Design Workshop



Rules:

Everyone Participate

Share Your Ideas & Respect Opinions of Others

Have Fun !!!



# Community Design Workshop



6:20 PM Breakout Session #1

7:10 PM Breakout Session #2

8:00 PM Report Back

Community Design Workshop

Ready

Set

**Charrette**



# Community Design Workshop

## Goals:



Analyze the Situation –  
What Does NOT Work

Set Goals &  
Formulate a Vision for the Future

Generate Ideas, Options, Strategies –  
Create a Concept Plan and Image Collage

# Make Your **Mark** On the **Park**



Provide Your Ideas  
for the Future



## **Lewisburg Parks & Bull Run Greenway**

### **Community Design Workshop**

VIS

EY