

# LEWISBURG RIVER TOWN



PUBLIC PLANNING MEETING  
November 14, 2018

# Charrette Agenda

- 6:00 Welcome, Introductions –  
Pizza!
- 6:10 Background Presentation
- 6:50 Engagement Exercise
- 7:10 Break Outs – People & Places
- 7:45 Prioritization – Dot Voting
- 7:55 Closing

# Lewisburg Is a River Town, But

- ▣ The Borough has a weak connection to the river
- ▣ Views of the river from riverbank parks are limited
- ▣ Local events struggle to incorporate or acknowledge the river
- ▣ There is only one access ramp with inadequate parking and a low quality launch point.
- ▣ The various existing parks along the river are under-developed and under-utilized
- ▣ Pedestrian infrastructure peters out before reaching many of the riverfront sites
- ▣ The Borough is trying to move beyond taking the river for granted at best and ignoring it at worst.
- ▣ In spite of working on it for several years, this is still the case!

# Vision of a Better River Connection

- ▣ Enhances property values.
- ▣ Attracts visitors to community, with consequent benefit to local economy.
- ▣ Improves aesthetic appeal & community identity.
- ▣ Encourages healthy lifestyle / exercise / recreation.
- ▣ Increases appreciation of local waterways and environment among residents.
- ▣ Increases appreciation for Lewisburg's historic and cultural connection to the river and the creek.
- ▣ Offers great "active" opportunity for families.



# Background

- ▣ After initial resident interest in improving connections to the river, some basic concepts were explored in 2013
- ▣ Borough Council approved having the LNC and LDP pursue becoming an official River Town
- ▣ The LNC engaged a variety of community leaders and stakeholders and worked to obtain designation
- ▣ A community meeting in Nov 2014 established 4 focus areas: Events/Awareness, Conservation, Planning, & Connectivity (now Walk It! Bike It! Lewisburg)
- ▣ In April 2016 there was a follow up public meeting, a design charrette or workshop
- ▣ We are building now on all this previous work

# Stakeholders

- ▣ Borough of Lewisburg
- ▣ Borough Residents
- ▣ Borough Property Owners (both adjacent and surrounding)
- ▣ Union and Northumberland Counties
- ▣ Adjacent Municipalities (Kelly, East Buffalo, West Chilisquaque)
- ▣ North Shore Railroad
- ▣ RiverWoods
- ▣ Tourists
- ▣ Susquehanna Valley Visitors' Bureau
- ▣ Local canoe/kayak livery
- ▣ PA Fish and Boat Commission
- ▣ Linn Conservancy/ Buffalo Creek Watershed Alliance
- ▣ PA DCNR
- ▣ Susquehanna Greenway Partnership
- ▣ Bucknell University
- ▣ Buffalo Valley Recreational Authority
- ▣ Others?

# Existing and *Proposed* Activities

- ▣ Downtown Partnership Polar Bear Plunge
- ▣ Dinner by the River at First Presbyterian Church
- ▣ Spring riverbank cleanups
- ▣ River Road Holiday
- ▣ Picnics in the Park
- ▣ Fall In-river cleanup
- ▣ Fall community cleanups
- ▣ Tours
  
- ▣ *Art installations celebrating the river site*
- ▣ *Fun floats*

# River Town Events

# Polar Bear Plunge



© Guttendorf



Copyright © 2010 Terry Moore



# Community Clean Ups





# River Awareness Activities

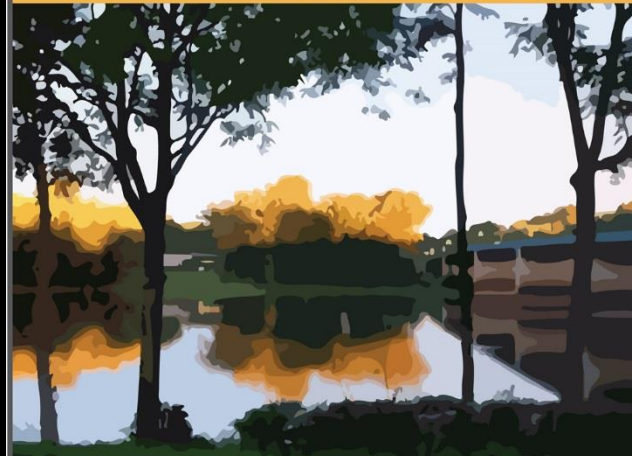


## Picnic in the Park

5:30 to 7:30pm, Thursday, August 28

Soldiers Memorial Park

North Water Street, Lewisburg



BYOBlanket and pack a picnic dinner  
or purchase one from vendors on site.

Get Together and Remember the River!

A Project of the Lewisburg River Town Team.

For more info, call 570.523.0114,  
email [elmstreet@dejazzd.com](mailto:elmstreet@dejazzd.com), or  
visit [lewisburgneighborhoods.org](http://lewisburgneighborhoods.org).





# Conservation





# River Road Holiday



# River Town Special Projects

## SAVE THE DUCKS

PLEASE DON'T FEED DUCKS BREAD.  
IT CAN KILL THEM!

INSTEAD FEED THEM THESE  
HEALTHY FOODS:

- CORN (CANNED, FROZEN, OR FRESH)
- DEFROSTED FROZEN PEAS
- OATS (ROLLED OR INSTANT)
- SEEDS
- FRUITS
- WEEDS
- COOKED OR GRATED CARROTS

For specific reasons, sources,  
and more scan this QR code



Created by Isaac Sussman

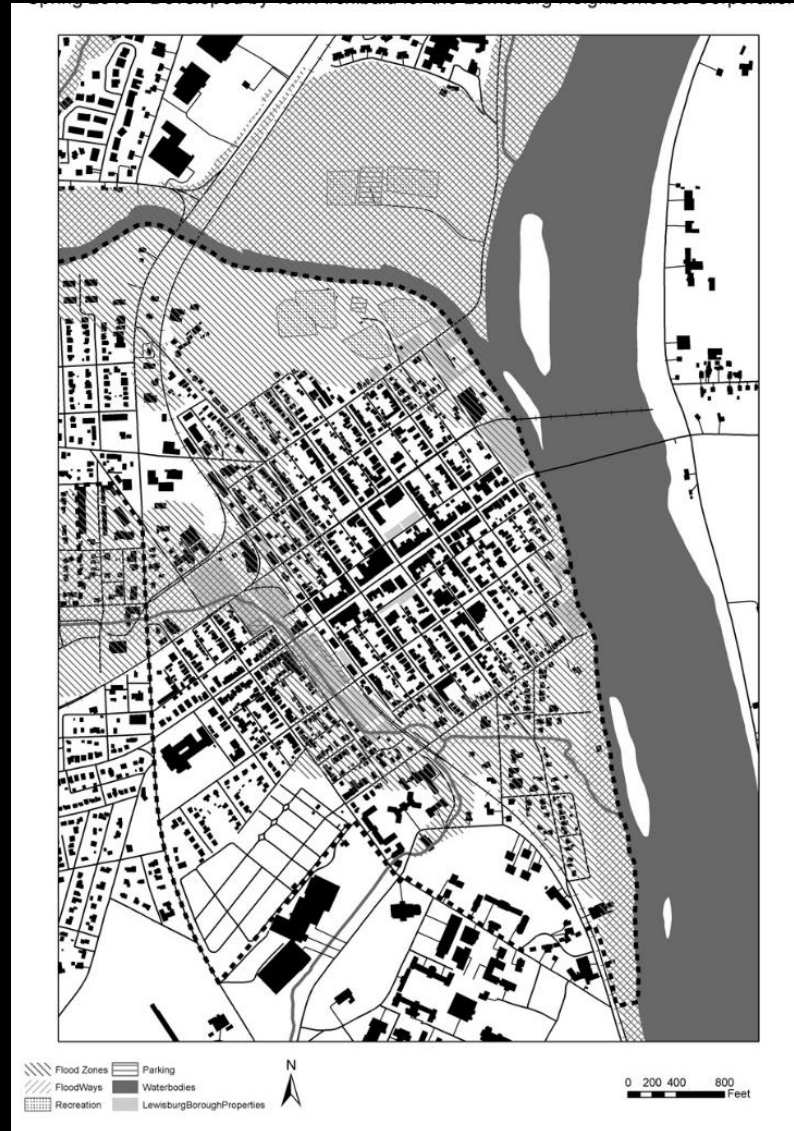


# River Town Planning

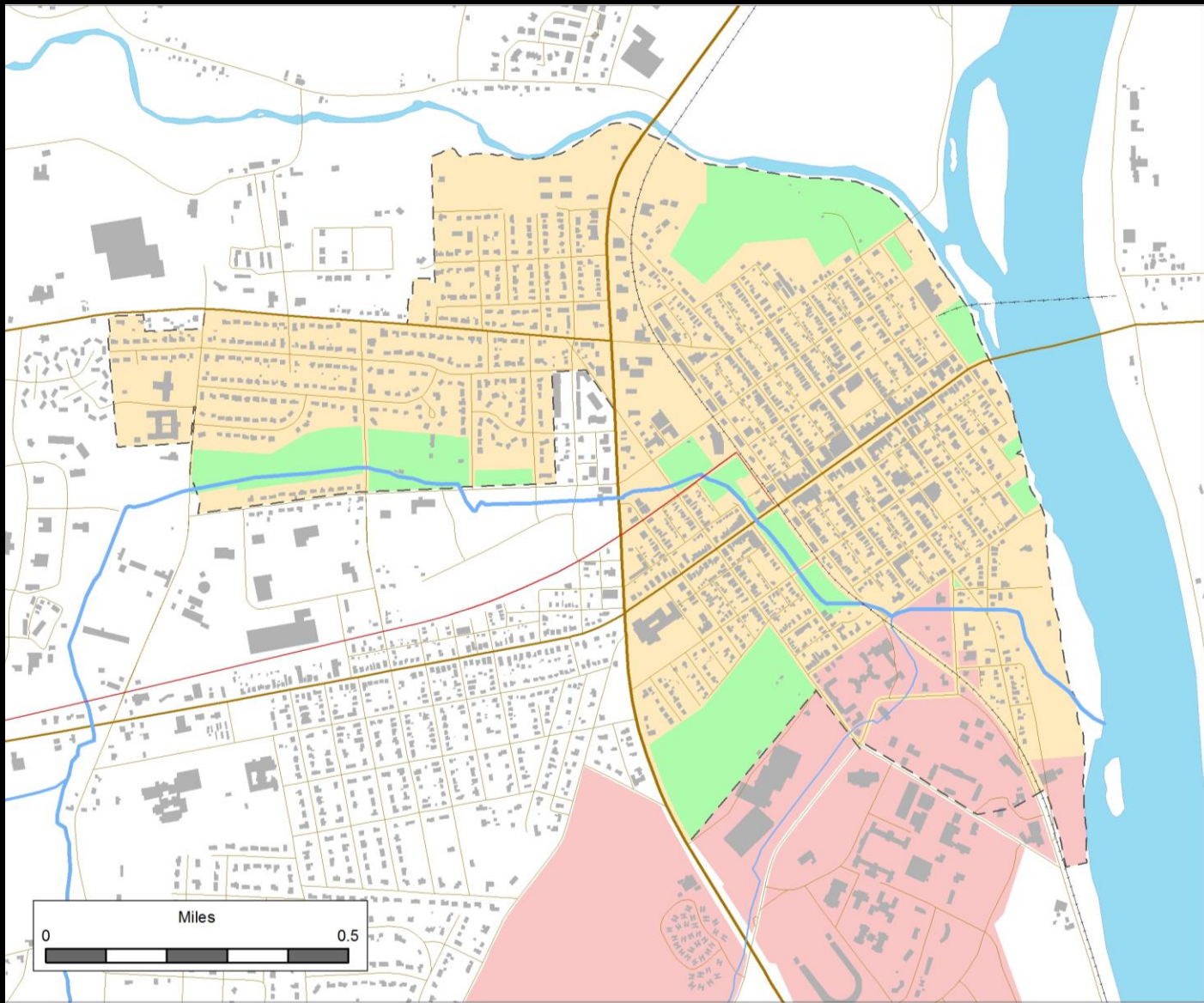
- ▣ At the design workshop in 2016, we set the stage by giving a presentation about the history of the riverfront in Lewisburg
- ▣ Then we split up into breakout groups to look at the various different sites along the river
- ▣ The results of those sessions are still being worked into graphics, though we do have initial sketches
- ▣ And the wishlist of concepts that emerged for each site have been listed on large sheets of paper on the walls tonight
- ▣ You will be asked first to review and comment on the ideas and then, at the end of the meeting, to vote for your favorites



# River Town Base Map

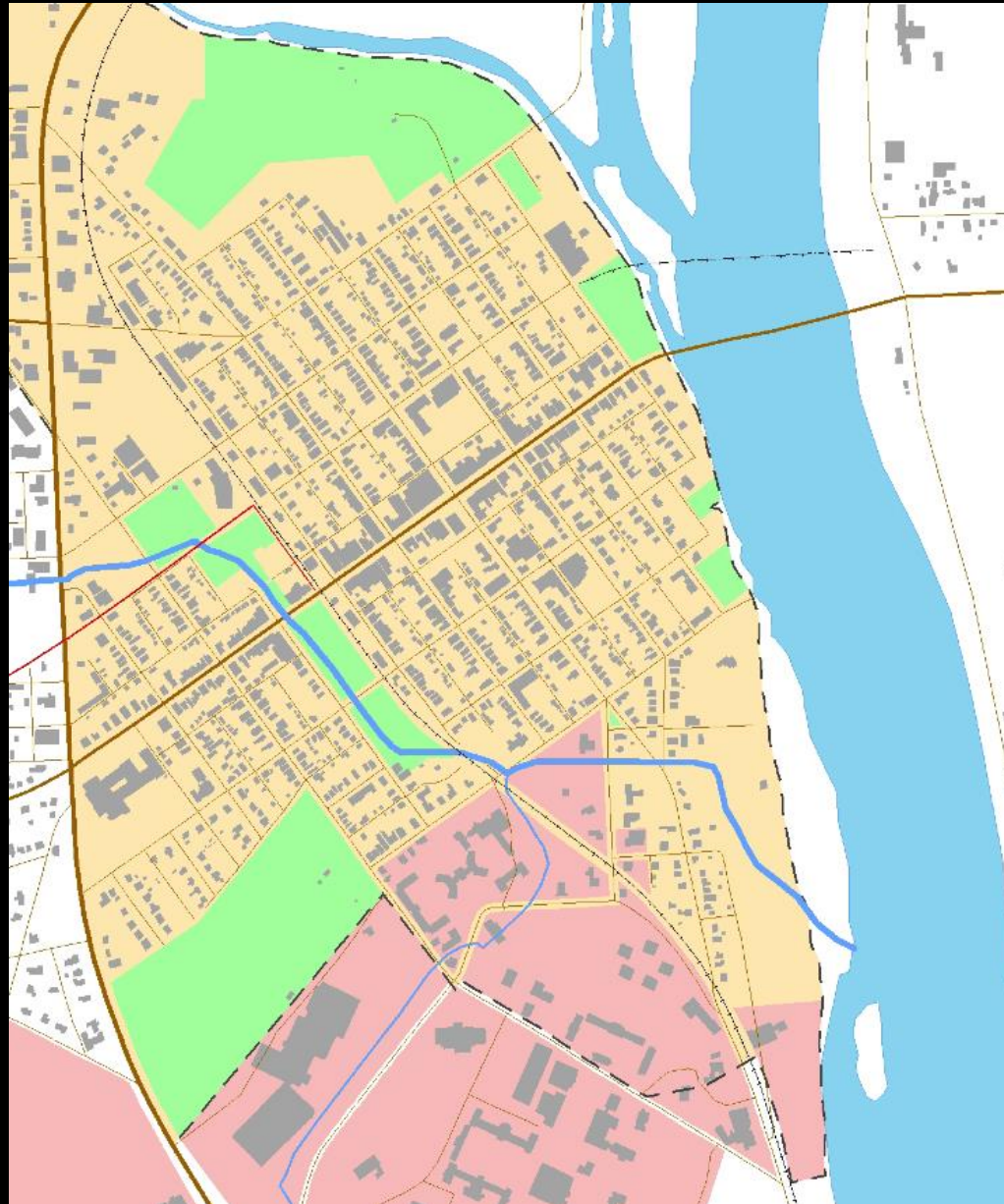


# River Town Base Map



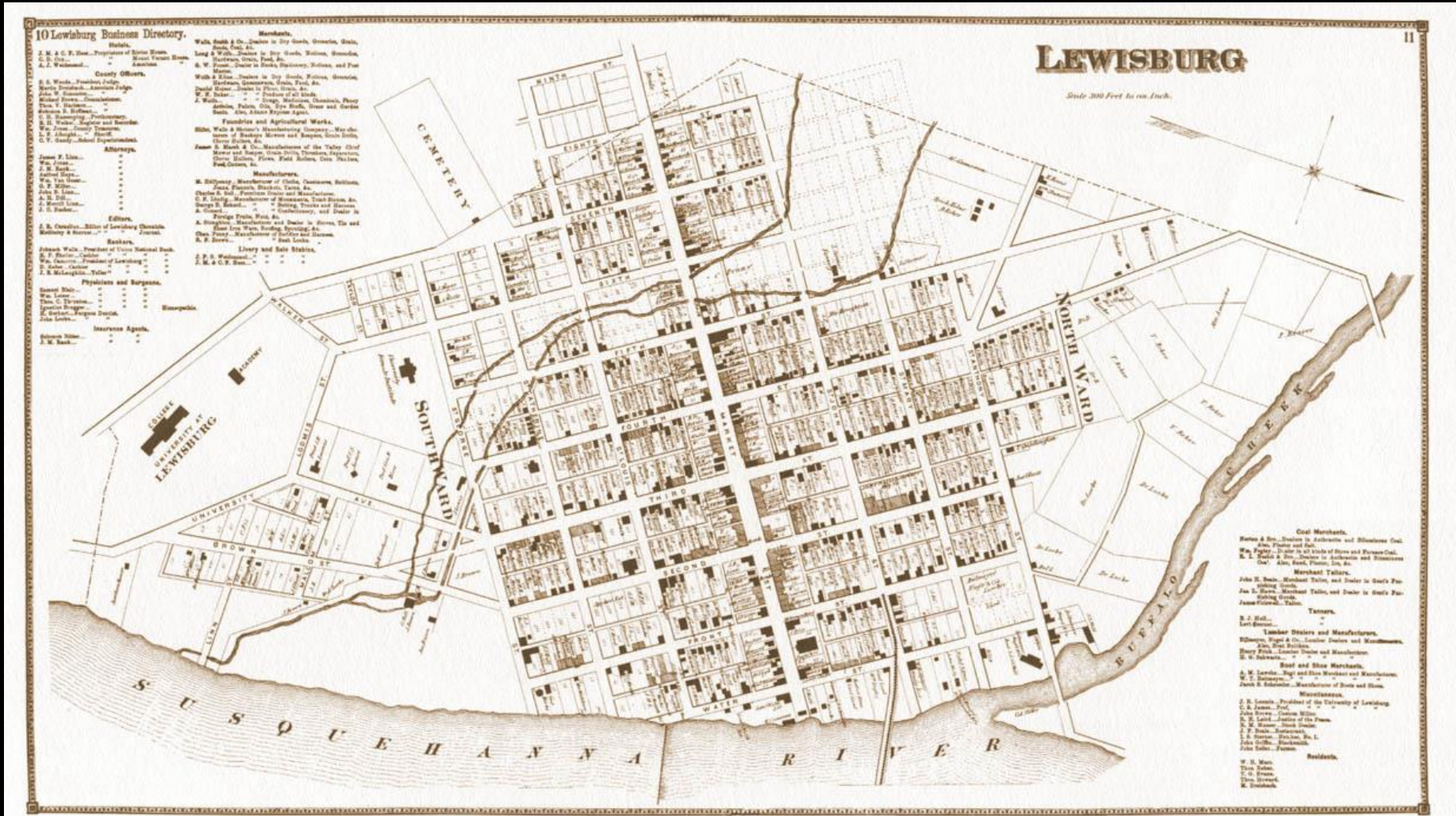


# River Town Base Map

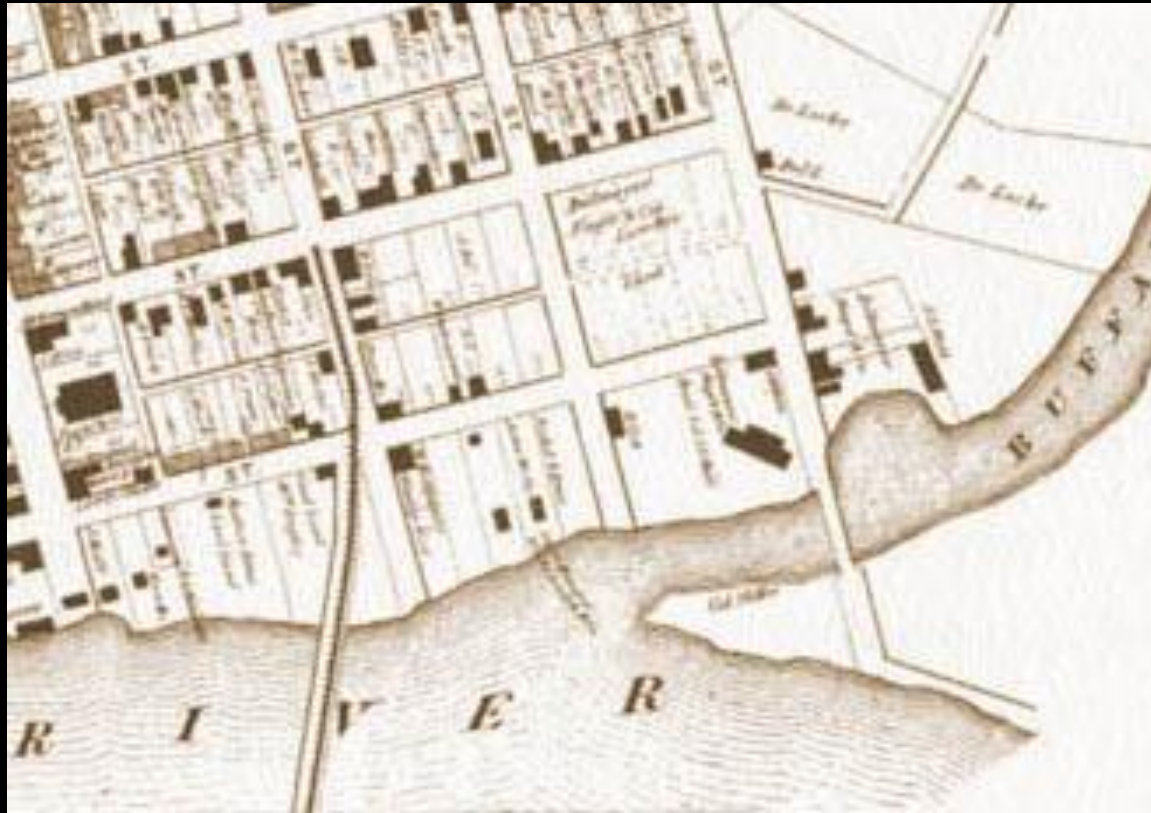




# What Came Before?



# What Came Before?





# What Came Before?



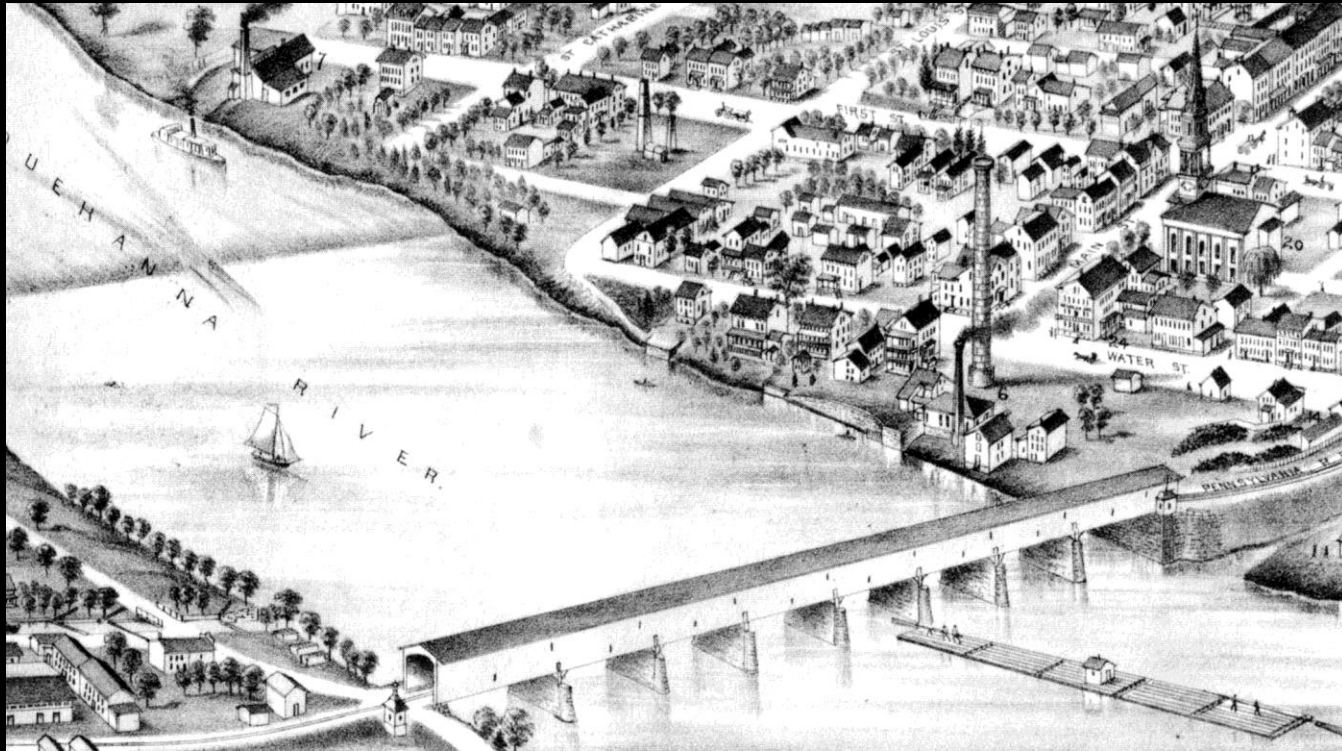
# What Came Before?



1884



# What Came Before?

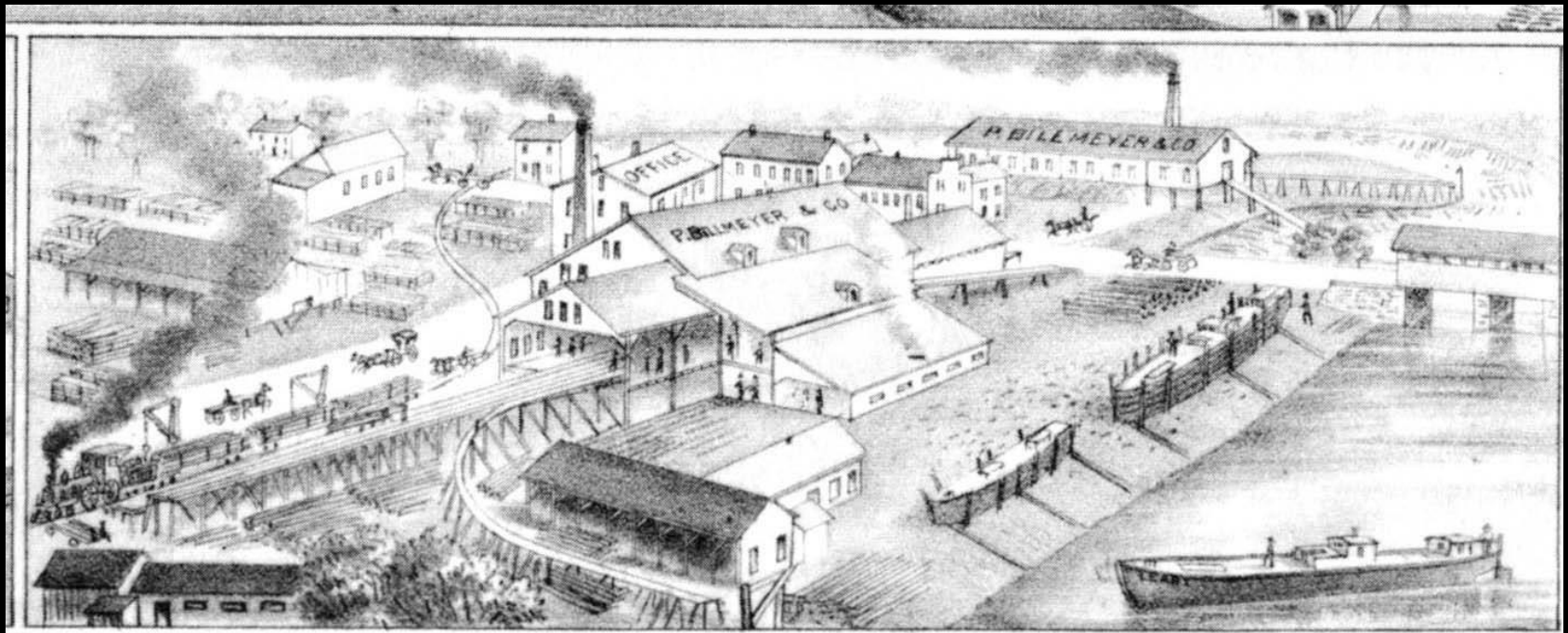


# What Came Before?





# What Came Before?

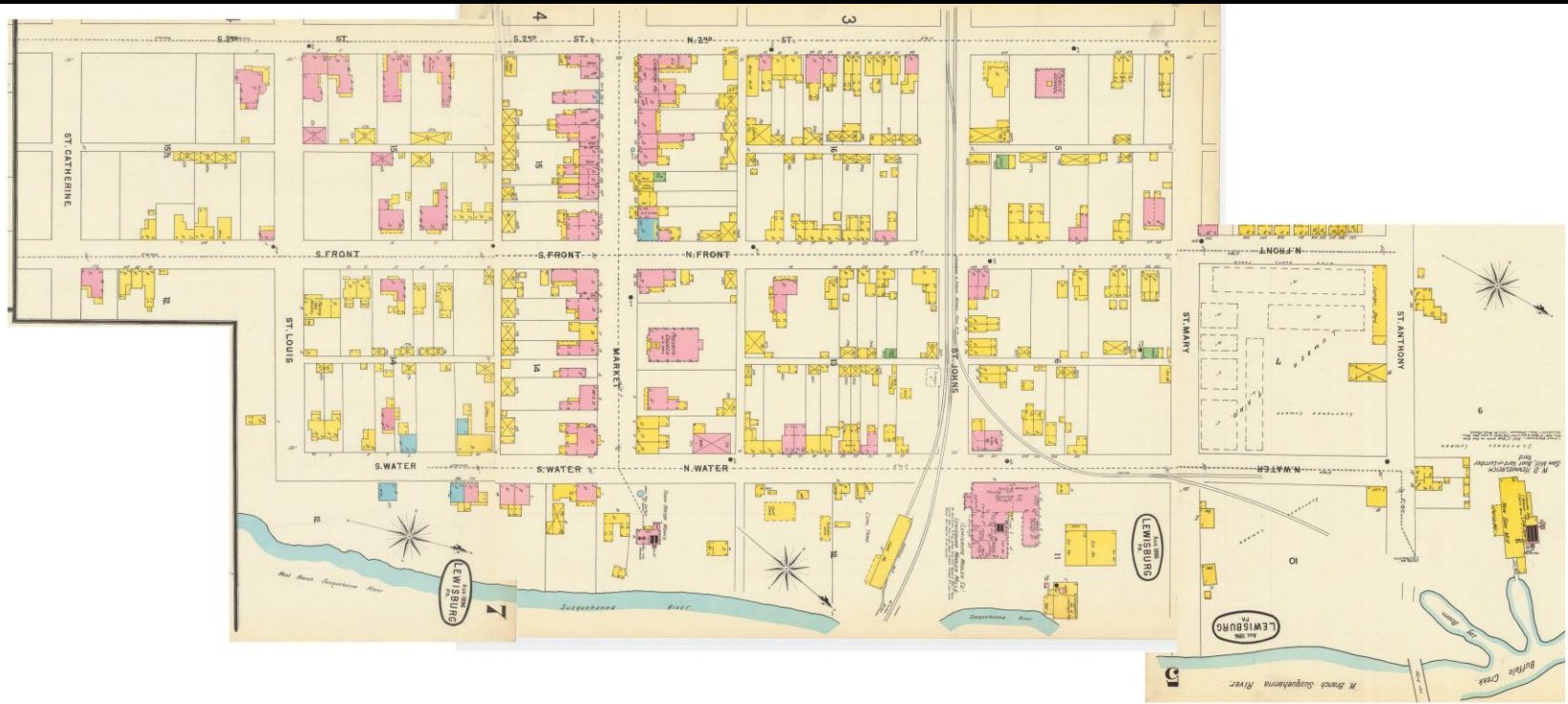


P. BILLMEYER & CO.

BUILDERS OF CANAL BOATS & BARGES & MANUFACTURERS OF ALL KINDS OF LUMBER, WHITE OAK SHIP PLANK, ALSO WHITE PINE DECKING ALWAYS ON HAND.



# What Came Before?



1896

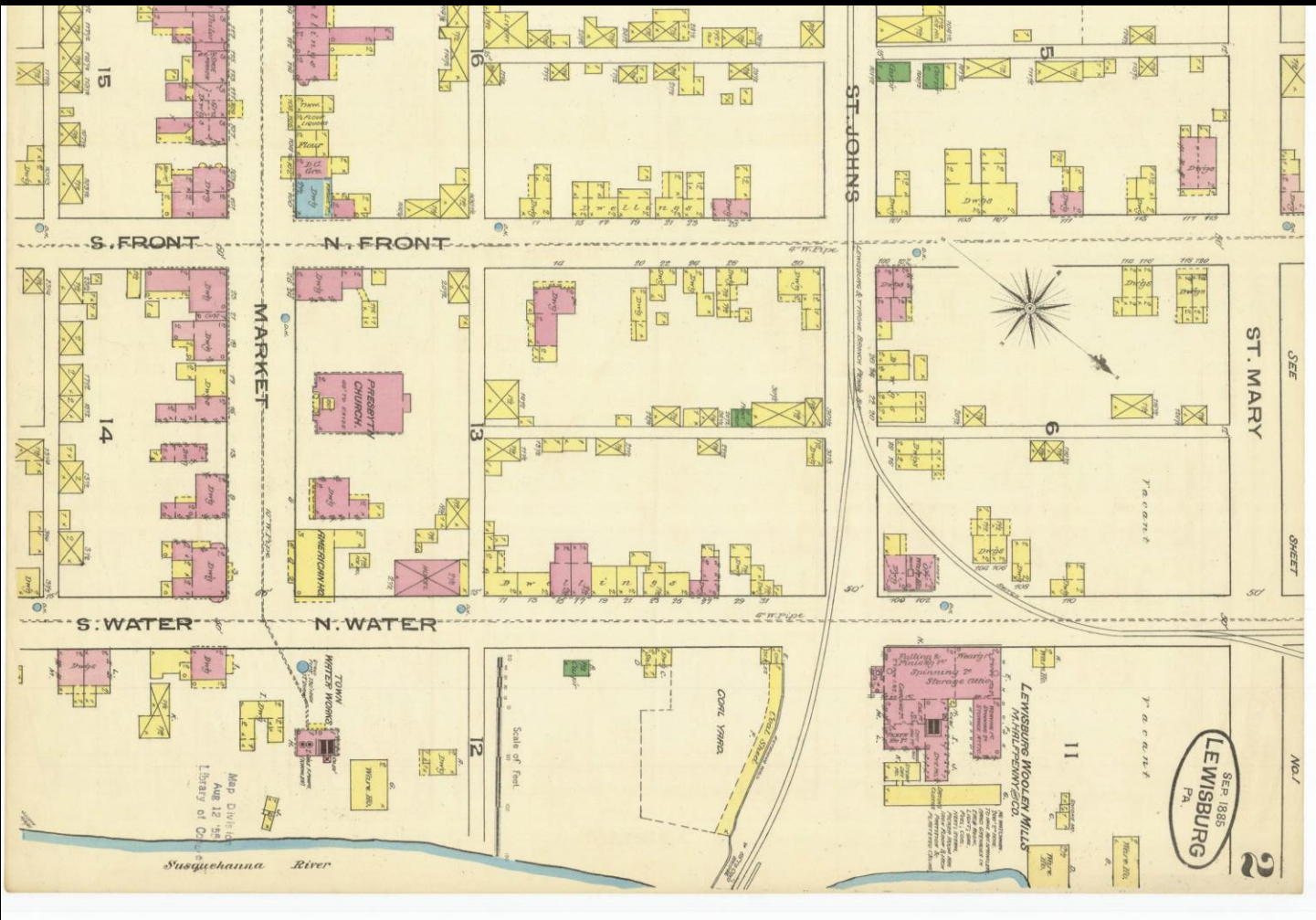
<http://www.libraries.psu.edu/psul/digital/sanborn.htm>

# What Came Before?



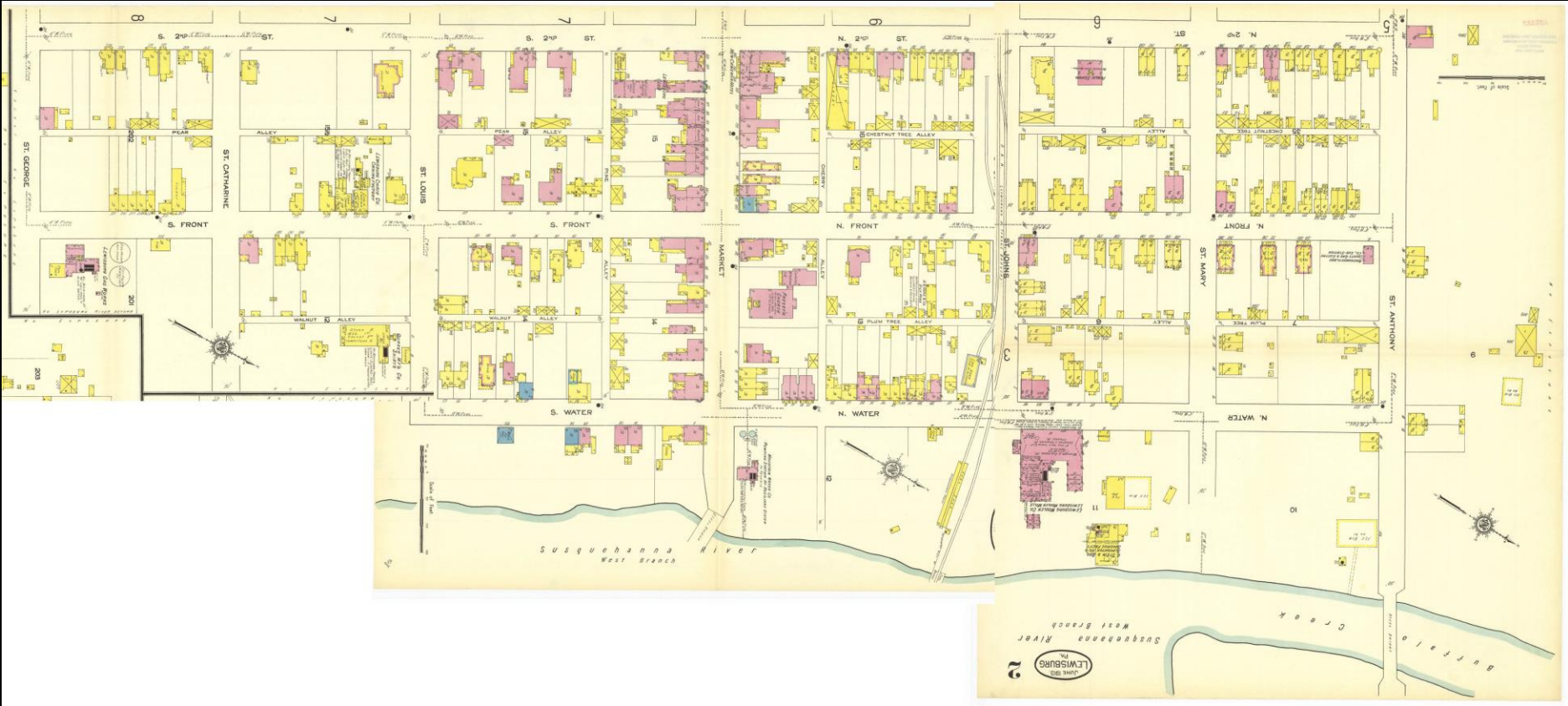


# What Came Before?



1896

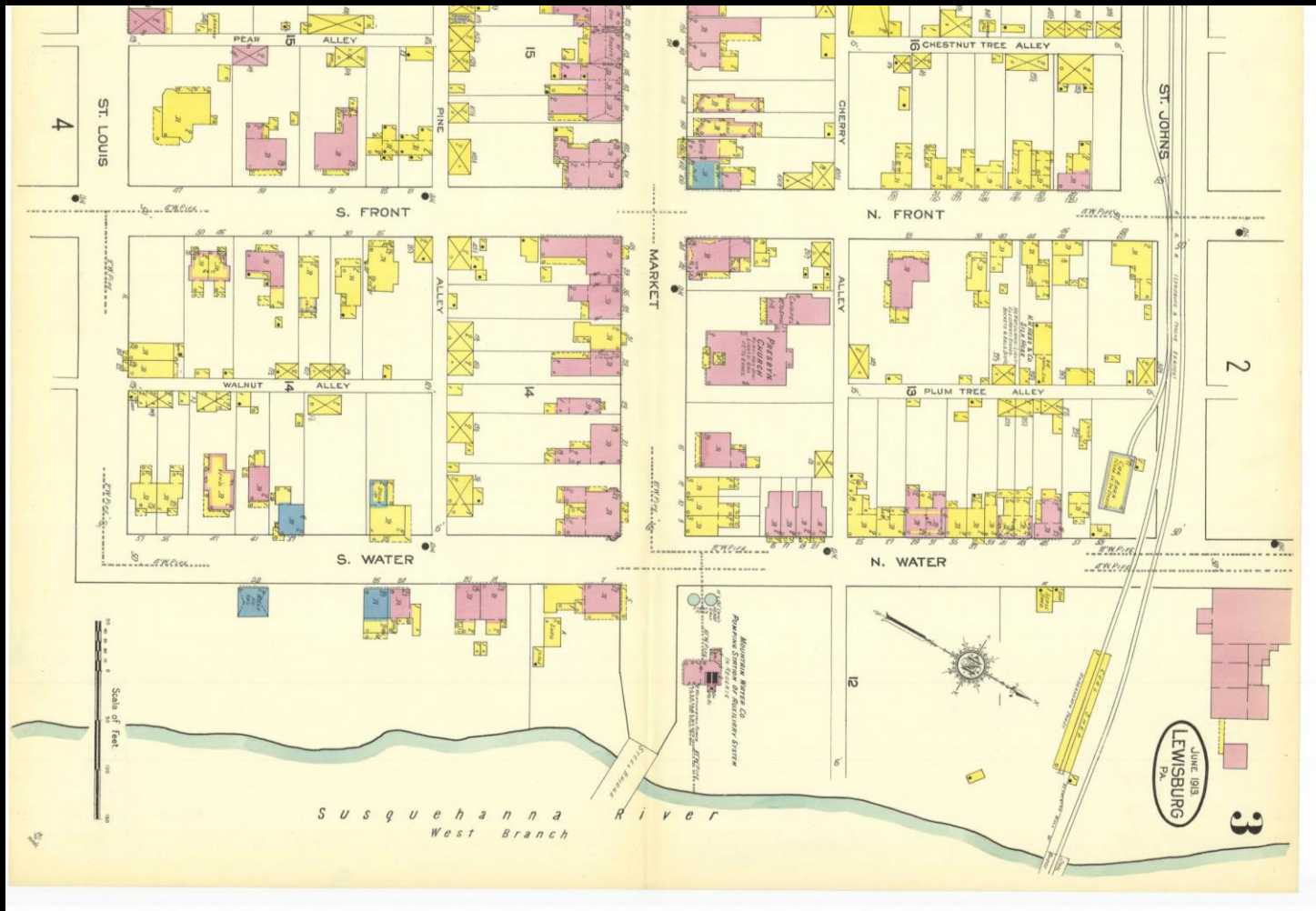
# What Came Before?



1913



# What Came Before?



1913

# What Came Before?



1938



# What Came Before?



1959



# What Came Before?



# What Came Before?



# Water Access Opportunities





# Riverfront Property Ownership





# Potential Launch Sites





# Riverfront Vignettes - Scenic



WOLFE FIELD



COMMUNITY GARDEN



MARIAH'S GARDEN



SOLDIERS PARK



LEWISBURG LANDING



# Riverfront Vignettes – Less So



WOLFE FIELD



COMMUNITY GARDEN



MARIAH'S GARDEN



SOLDIERS PARK



LEWISBURG LANDING

# Wolfe Field Unplanned Projects





# Wolfe Field Unplanned Projects

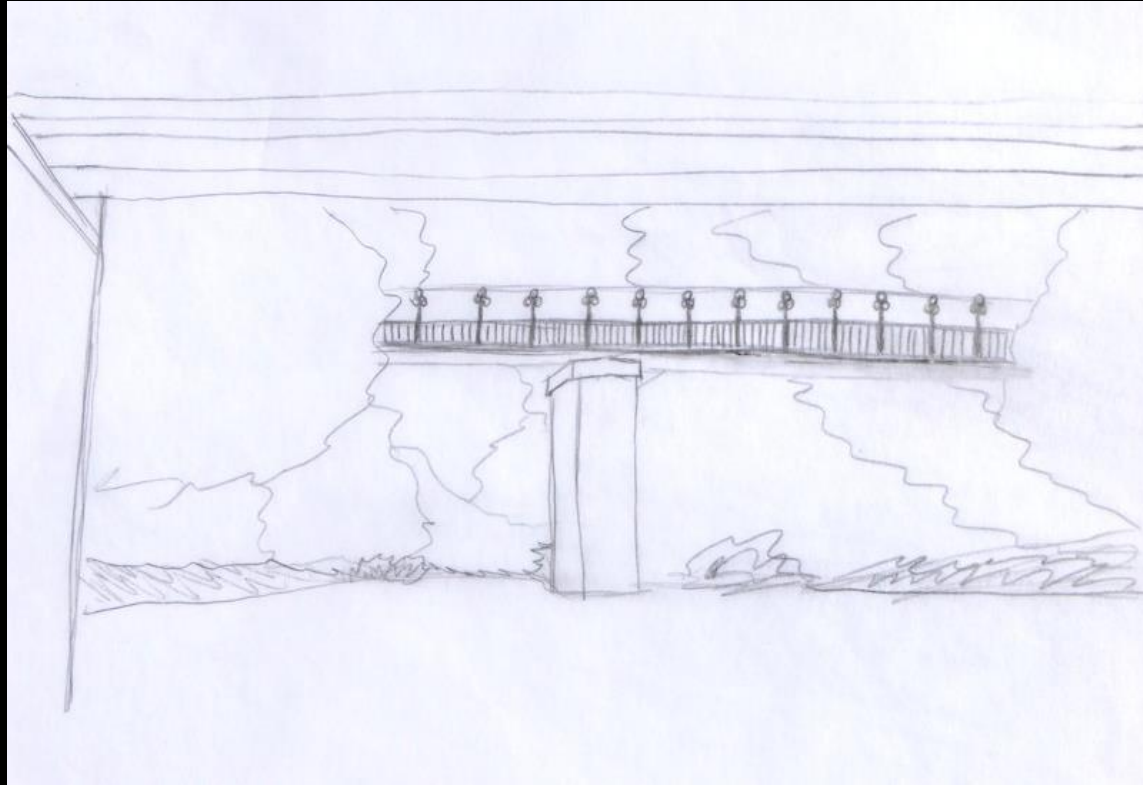




# Wolfe Field Potential Projects



# Wolfe Field Potential Projects



# Rail Trail Bridge Concepts





# Rail Trail Bridge Concepts





# Rail Trail Bridge Concepts





# Rail Trail Bridge Concepts





# Bridge Abutment Park Space



# Bridge Abutment Park Space





# Soldiers Memorial Park



Play castles at old  
water tower foundations  
for kids

BRIDGE

# Market Street Signage





# Soldiers Memorial Park



# Lewisburg Landing

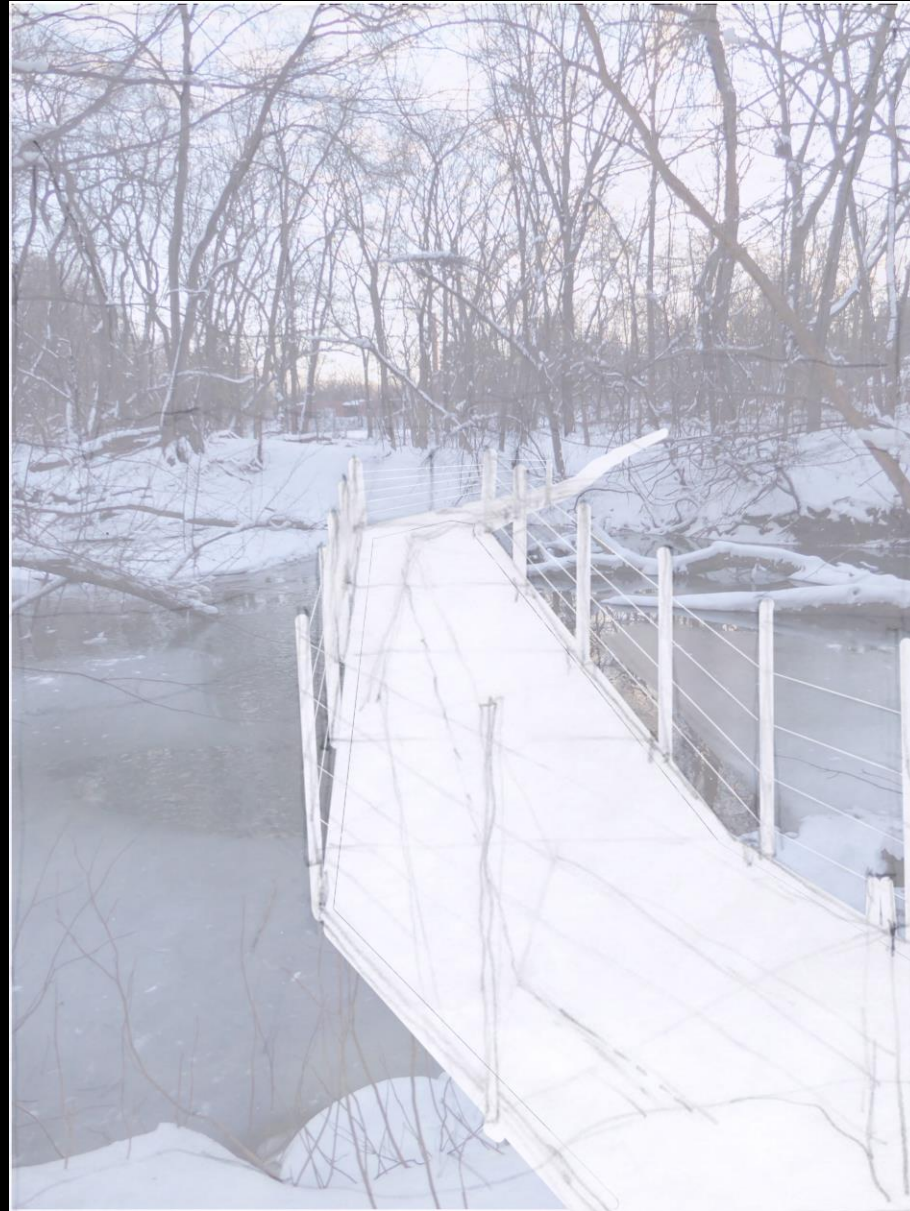




# Riverwalk Dam Walkway



# Riverwalk Dam Walkway





# ...or Riverwalk Dam Removal?



# Wishlist

Improvement	Wolfe Field	Comm Gard	Soldiers Park	Mariah's Garden	Lewisburg Landing
<b>Access to park</b>					
Sidewalks		X	X		X
Parking	X	X	X		X
Signage	X	X	X	X	X
<b>Park usability</b>					
Rest rooms			X		X
Electricity		X			
Pavilion/gazebo	X	X	X		X
Benches		X	X	X	
Picnic tables		X	X		X
Water (spigot)	X		X		X
<b>Connection to river</b>					
Trails along river	X	X			
Boat launch	X		X		X
Boat rental	X				
River visibility		X	X		X
<b>Conservation</b>					
Plant trees	X	X	X	X	X
No mow areas	X	X	X	X	X
Native plants	X			X	X
<b>Park-Specific ideas</b>					
Recreation	areas to ride bikes; bike skills area; areas for other sports, basketball?		rail trail on bridge; bike-share Kid Zone; adventure ropes course on bridge	swings	hospitality center for kayakers
Access	connection to RiverWoods; path to Rte. 15; access to Beck St.		stairway to river; floating boardwalk; hand carry access across island; abutment park		maintenance plan for River Walk; visitors' center; connection across creek
Miscellany	more native plants; plan to control knotweed		public art; flagpole; gateway to Borough	more native plants; plan to control knotweed	more native plants; plan to control knotweed
<b>Other</b>					
Events	floats		environmental ed. for kids		outdoor movies; public campfire hammocks
Recreation	pump track; walking trail	place for children to play			
Miscellany	tree nursery; areas to walk dogs		running water; more- central electricity		



# What would make community connection to the River stronger?

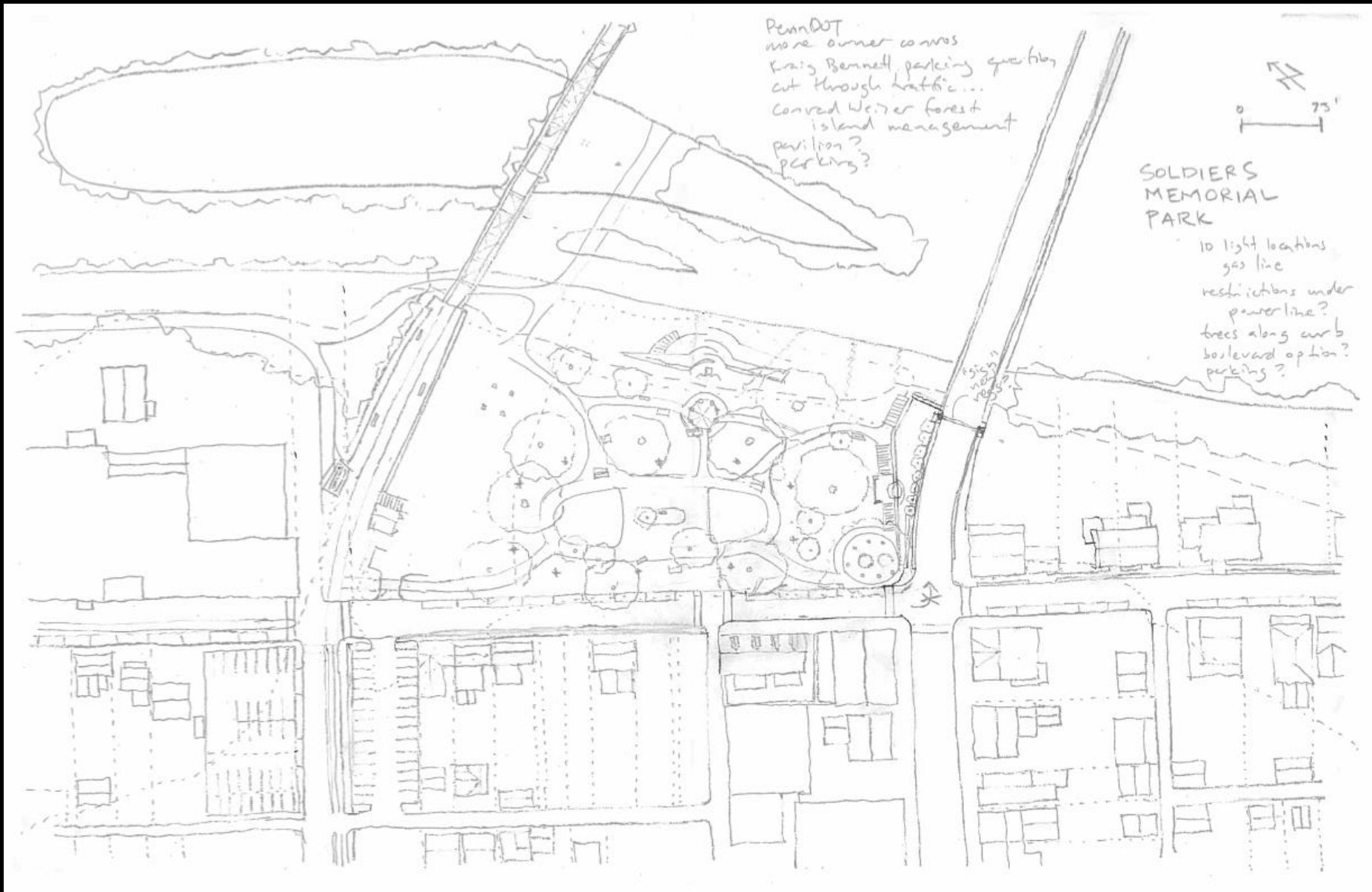
- ▣ Dog Parks
- ▣ More access points
- ▣ Dining on the River
- ▣ Extend the Rail Trail across the old railroad bridge
- ▣ Amphitheatre, Concerts along the River
- ▣ Cleanups
- ▣ More walking/bike trails
- ▣ What else?

# Wolfe Field Sketch Plan





# Soldier Memorial Sketch Plan



# Soldier Memorial Draft Plan



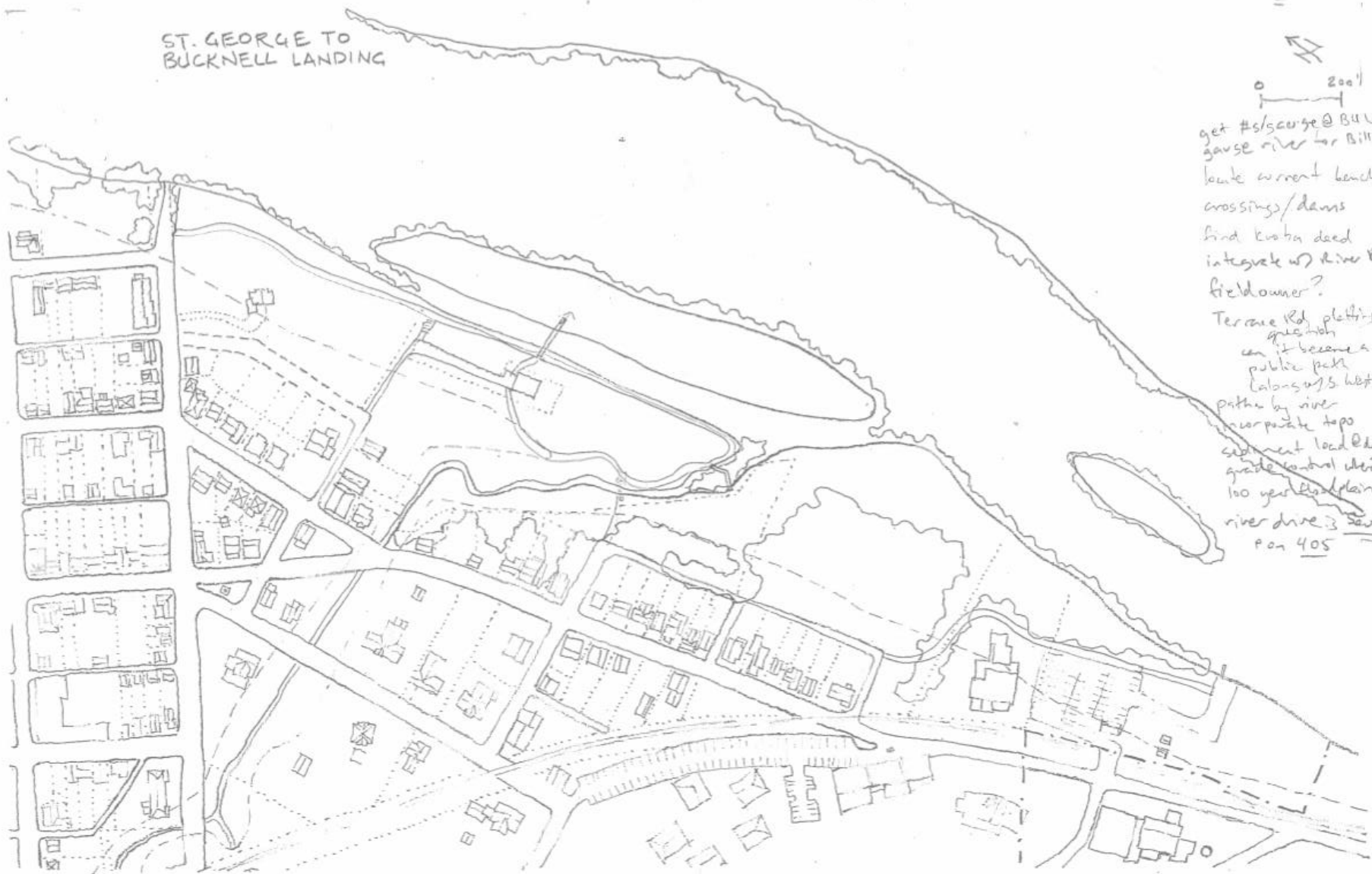


# South of Market Rendered Plan



# River Walk South Sketch Plan

ST. GEORGE TO  
BUCKNELL LANDING



0 200'

get #s/survey @ Bill's  
gauge river for Bill D.  
locate current benches  
crossings/dams  
find Kuba deed  
integrate w/ River Rd  
fieldowner?  
Terrace Rd. plotting  
can it become a  
public park  
Calansu's wetland  
paths by river  
near park to go  
segment local plan  
grade control etc.  
100 year floodplain  
river drive 3 South  
P on 405



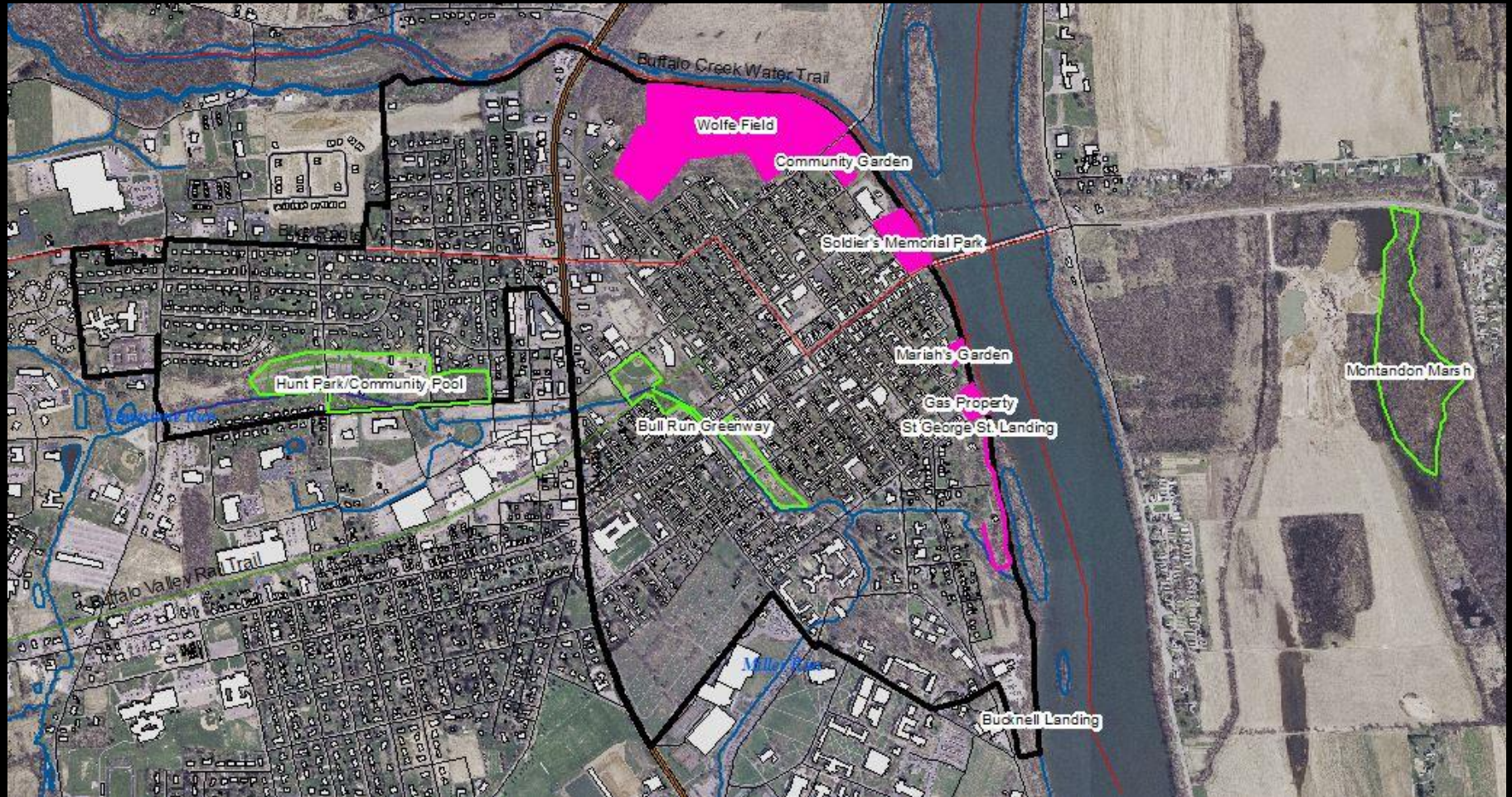
# River Engagement Exercise

Considering our own personal history and experience with the Susquehanna River and putting that in context for the majority of residents in and visitors to the region.

Self mapping:

Where you live, where you spend your day, where your mother grew up, where your father grew up, how important was a body of water to you as a child? (Were you on or by the river this year? More than once? At least once in 5 years?)

# River Town Expanded Field





# Let's Get Started

- ▣ Break Out Sessions:
  - Lewisburg Base Map – with Sam Pearson
  - Wolfe Field – with Brian Auman
  - Community Garden – with Dorothy Hvozda
  - Soldiers Memorial Park – with Steve Lindenmuth
  - Mariah's Garden – with Kim Wheeler
  - Lewisburg Landing – with Alexandria Chomyn
  - Oral Histories of Flooding – with Ainslie Eck
- ▣ Review the wishlist for each site and adjust, adapt, suggest, and update it as appropriate

# Let's Get Started

- ▣ Things to keep in mind:
  - Recreation (community uses)
  - Conservation (natural environment)
  - Awareness (education and events)
  - Connectivity (access network)
  - Downtown (economic development)



# Discussion Questions

- ▣ Have circumstances or expectations for this site changed in the past few years?
- ▣ What is missing from the wishlist for the site?
- ▣ Are there events specific to this site that you would like to see happen in the future?
- ▣ Do you know of history on this site you'd like to share?
- ▣ Are there any places you have visited elsewhere that could be a model for what could happen on this site?
- ▣ Would the wishlist make you want to spend more time there? Or bring other people there?

# Riverfront Vignettes - Scenic



WOLFE FIELD



COMMUNITY GARDEN



MARIAH'S GARDEN



SOLDIERS PARK



LEWISBURG LANDING



# Prioritization

- ▣ Review of wishlists and edits
- ▣ Explain dot voting process
- ▣ Hand out dot stickers
- ▣ Everyone select what you think is most important

# Next Steps for the RTT

- ▣ Compile all your great ideas.
- ▣ Collate the prioritizing votes.
- ▣ Coordinate efforts with partners.
- ▣ Address easy win gaps.
- ▣ Start pursuing grant funding for bigger projects.
- ▣ ENJOY OUR RIVER TOWN!



# Next Steps for You

- ▣ ENJOY OUR RIVER TOWN!
- ▣ Sign up for LNC email updates and like and follow us on social media so you can know about upcoming events and activities
- ▣ Get involved in the follow up by participating in River Town Team meetings, Green Team work sessions, and Walk It! Bike It! Lewisburg meetings
- ▣ Check out the calendar of river town-related events on the Lewisburg Neighborhoods Corporation website:  
[LewisburgNeighborhoods.org/calendar](http://LewisburgNeighborhoods.org/calendar)

# Conclusion

- ▣ Thanks for your time and consideration!
- ▣ Questions?

For more info:

Lewisburg River Town Team

fb: On the River – Lewisburg

inst/tw: @OnTheRiverLburg

[LewisburgNeighborhoods.org](http://LewisburgNeighborhoods.org)

[elmstreet@windstream.net](mailto:elmstreet@windstream.net)

