

LEWISBURG A RIVER TOWN?



This presentation builds on an earlier studies by Bloomsburg planning student Jesse Lewis, North Ward Resident Andrew Ciotola, and Bucknell Geography students under Professor Marsh, as well as Susquehanna Greenway Partnership materials.

River Town Meeting Agenda

- ▣ Welcome/ Introductions
- ▣ River Town Presentation
 - Background
 - SGP River Town concept
 - Lewisburg's potential
- ▣ Discussion with potential partners
- ▣ Feedback
- ▣ Schedule next meeting

Lewisburg Is a River Town, But

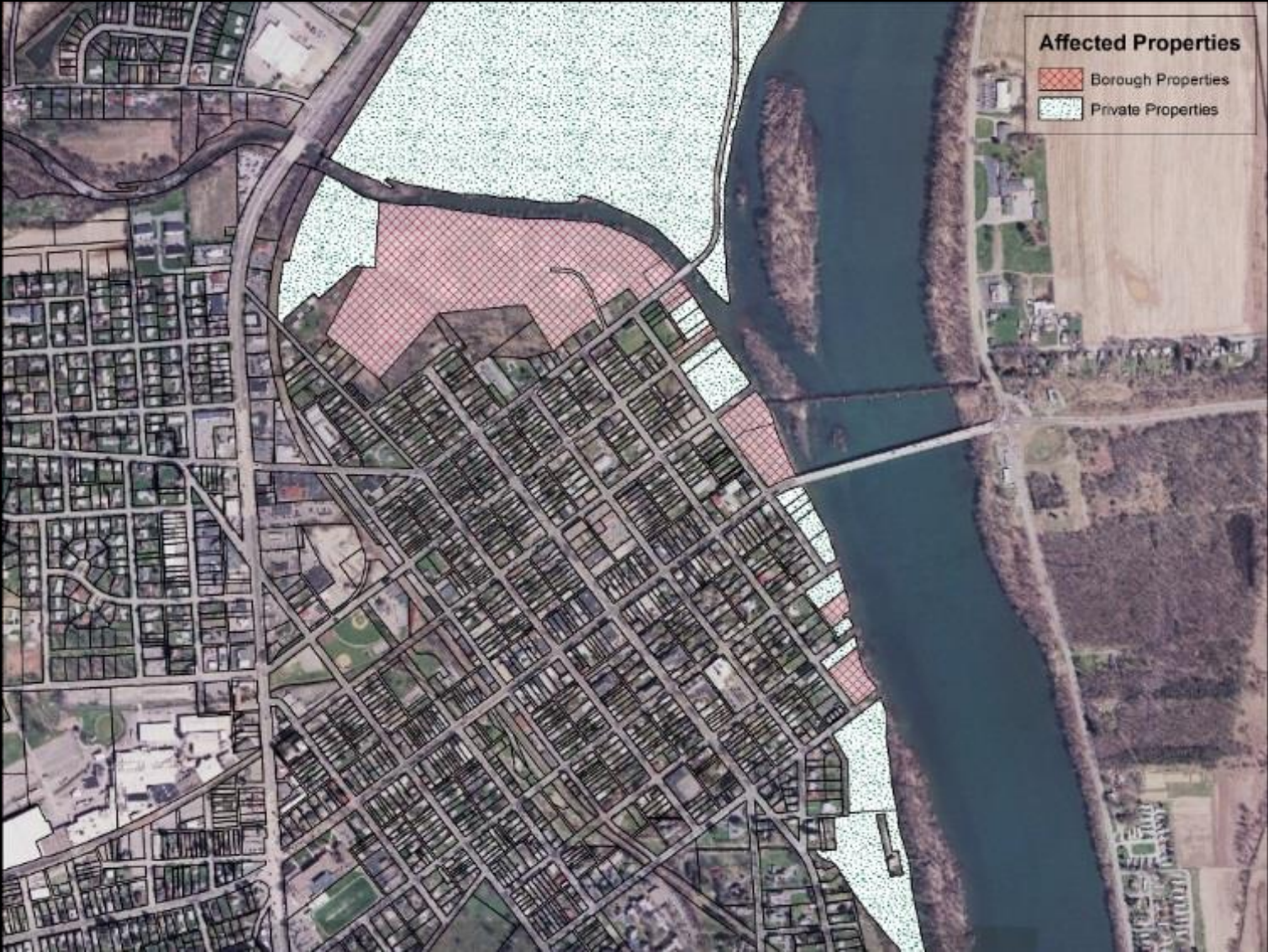
- ▣ The borough has a minimal connection to the river
- ▣ There is one access ramp which has inadequate parking and a poor quality launch point.
- ▣ The other existing parks along the river are similarly under-developed and under-utilized
- ▣ The town appears to take the river for granted at best and ignore it at worst.



Background

- ▣ North Ward residents expressed a desire for greater connection to the river.
- ▣ Summer intern from Bloomsburg University did a preliminary independent project looking at different launch sites in the Borough.
- ▣ Residents expanded on the intern presentation and approached Borough Council Planning Committee.
- ▣ The Council recommended the LNC continue to explore the idea of pursuing enhanced river access and the concept of becoming an official River Town.

Properties Directly Adjacent to Sites



Soldiers Memorial Park Site



Potential Launch Sites



Lewisburg's Riverfront



WOLFE FIELD SITE



ST ANTHONY ST SITE



MARIAH'S GARDEN SITE



SOLDIERS PARK SITE



ST GEORGE ST SITE

Bucknell Student Project

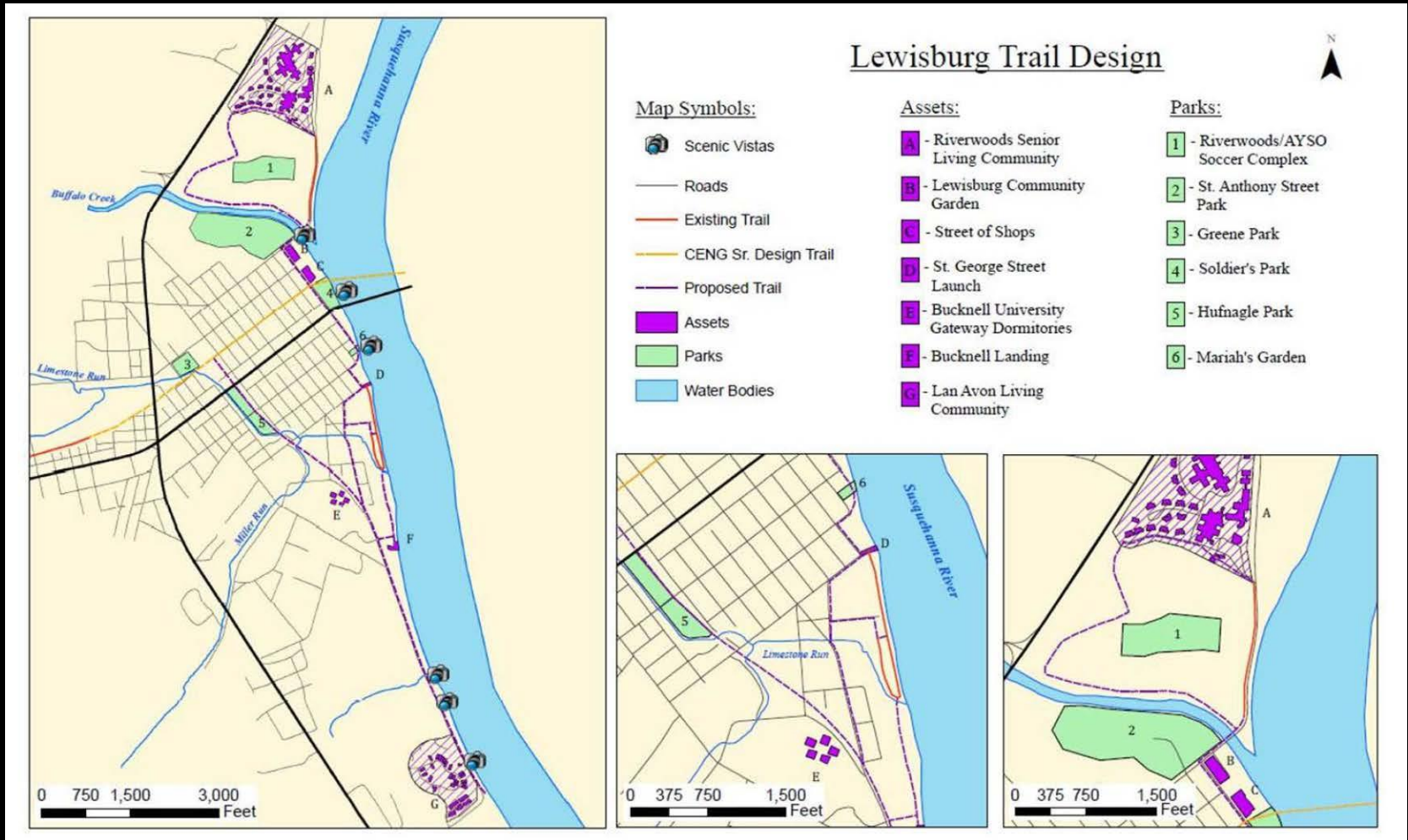
Spring 2013



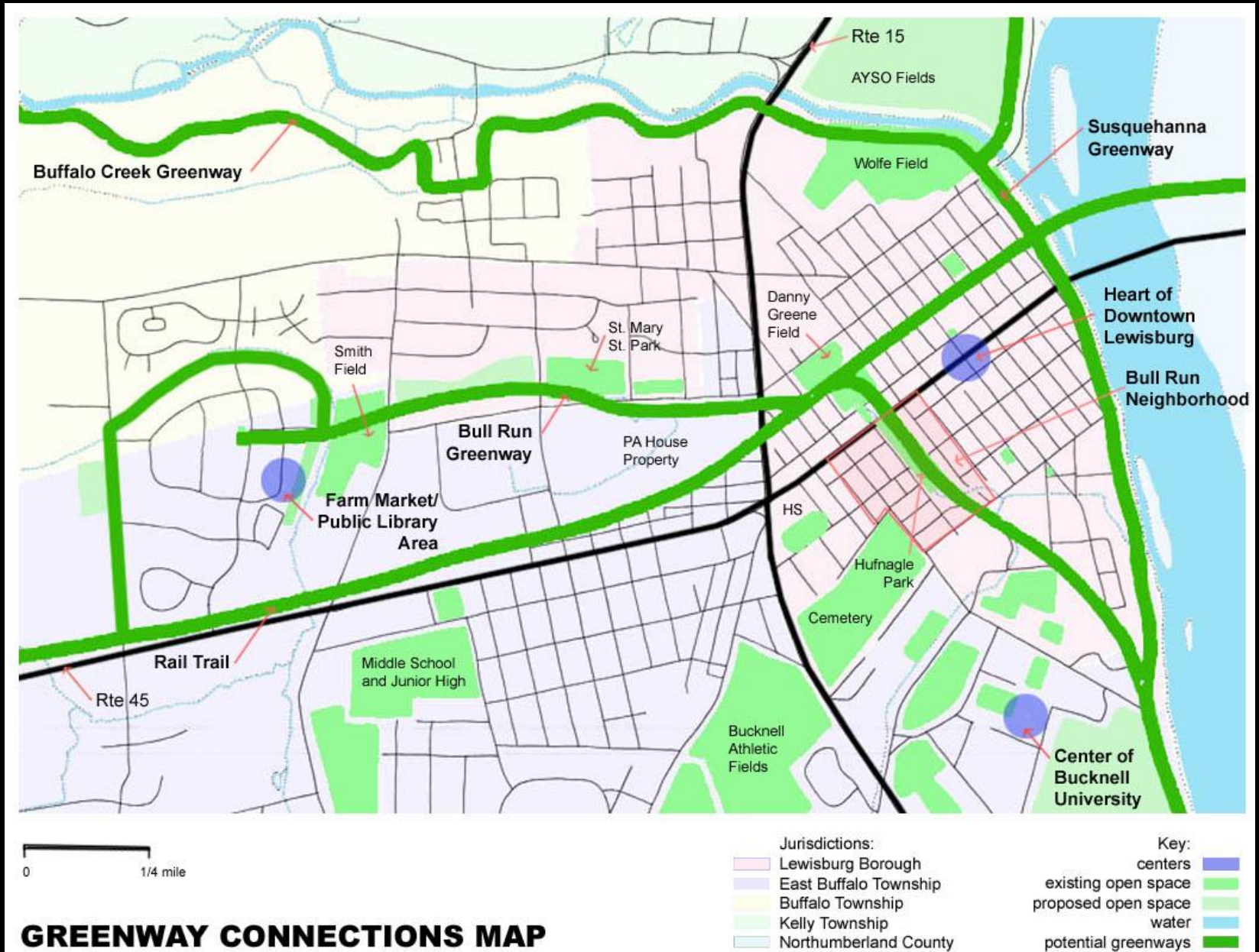
BUCKNELL
UNIVERSITY

IMPROVING RIVER ACCESS IN LEWISBURG, PA

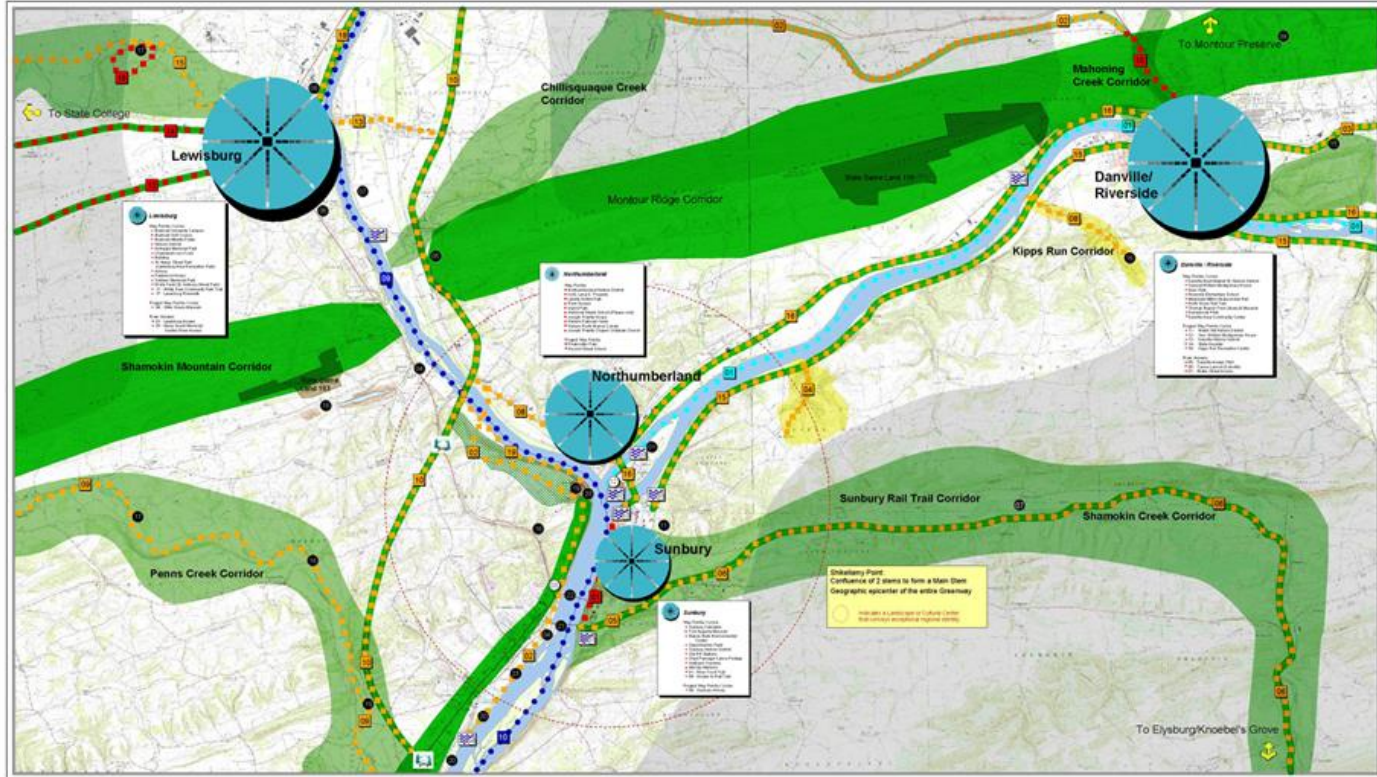
Bucknell Student Project



Bull Run Greenway



Susquehanna Greenway



Susquehanna Greenway Partnership

Way Points

Flow Access

Linkages

BRADY 40904

"HUB" COMPONENTS	"GREENWAYS" COMPONENTS	OPEN SPACE FRAMEWORK
<ul style="list-style-type: none"> Network Hub Journey Point Waypoint Waypoint (Secondary) River Access Portal Satellite Hub 	<ul style="list-style-type: none"> Network Corridor Major Corridor Minor Corridor Spur Land-Based Link Water-Based Link 	<ul style="list-style-type: none"> Public Reserved Private Reserved Important Natural Area



PANEL #7

SUSQUEHANNA GREENWAY DESIGN CONCEPT

BLOSS



Susquehanna Greenway River Towns Program

Offering recognition and assistance to Greenway communities that value the River as an asset for sustainable economic development and healthy living.



Susquehanna Greenway River Town Principles:

- Respect and work with the nature of the Susquehanna River
- Connect with the River both physically and visually
- Involve people with the River and their River Town
- Recognize that economic development favors River Towns





A Susquehanna Greenway River Town:

- values and protects the resources of the river
- provides connections to the river for recreation
- has a high quality of life
- is economically viable
- is a sustainable community
- is a healthy and safe community
- is accessible
- celebrates its heritage





Criteria to be designated as a Susquehanna Greenway River Town

- Be located within the Susquehanna Greenway
- Have an active “River Town Team”
- Commit to 2 projects a year
- Sign a municipal resolution upholding principles
- Submit a River Town application



Susquehanna Greenway River Town Designation Celebration



Susquehanna Greenway River Town Program Benefits



- Assistance with forming a River Town Team and community visioning
- Technical assistance for community assessment, planning, project identification, funding, and project implementation
- Eligible for DCNR Peer-to-Peer funding
- 2 River Town Signs, a table top display, a community map, and copies of the River Town Training Manual
- Community promotion throughout the entire 500 miles that make up the Susquehanna Greenway via our publications, social media and website





Susquehanna Greenway River Town Technical Assistance

- Community engagement, organizing and visioning
- Community assessment
- Community asset mapping
- Identifying priority projects
- Identifying local and regional partners
- Signage planning and design
- Identifying funding sources for projects/fundraising



Jersey Shore Complete Street Planning



Montgomery Tree Plantings



Millersburg River Town Panels



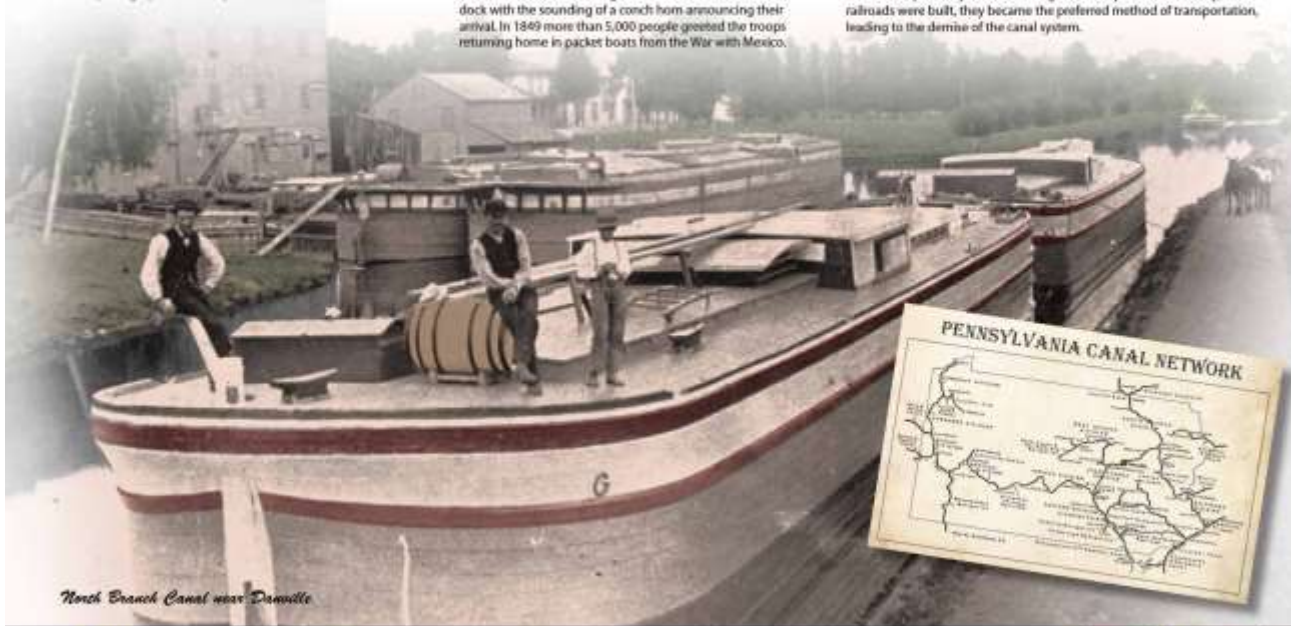
Danville Interpretive Panels

The North Branch Canal

In 1826 Daniel Montgomery, for whom the town of Danville was named, was elected president of the Board of Canal Commissioners. The North Branch Canal was surveyed in 1826-27, with construction of the canal between Northumberland and Nanticoke beginning in 1828. The first water was turned in during 1832 opening up a new transportation corridor.

At Danville the canal veered away from its normal place along the river to the center of town close to where the Montgomery family had mills. At one time Mill Street merchants advertised their business as north or south of the canal. Both cargo and packet boats, which had sleeping and dining accommodations, traveled the canal attracting local residents and visitors to the dock with the sounding of a conch horn announcing their arrival. In 1849 more than 5,000 people greeted the troops returning home in packet boats from the War with Mexico.

The use of anthracite coal in the iron furnaces in Montour County and the rolling of the first T Rail for building railroads at The Montour Iron Works on October 8, 1845, contributed significantly to the success of the North Branch Canal. Thousands of tons of coal were shipped from the Wyoming coalfields to produce the rails, which in turn were shipped to markets by canal boats pulled by mules traveling at 4 miles per hour. Ironically, as railroads were built, they became the preferred method of transportation, leading to the demise of the canal system.



North Branch Canal near Danville

LET THE
RIVER
BE YOUR
GUIDE

www.susquehannagreenway.org



River Towns Program Website



A screenshot of the River Towns Program website. The page has a dark header with navigation links: HOME, STEWARDSHIP, SPONSORS, TAGS, CONTACT. A search bar is on the right. The left sidebar contains the Susquehanna Greenway logo and a menu with categories like "EXPLORE", "ABOUT SGP", "OUR WORK", "NEWS", "RIVER TOWNS PROGRAM", "SUCCESS STORIES", "INTERPRETIVE PLAN", "RIVER TOWNS MANUAL", "SIGNAGE", "STRATEGIC ACTION PLAN", "GET INVOLVED", and "PUBLICATIONS". The main content area is titled "River Towns Program" and includes a "View" button, a "RIVER TOWN" icon, and text describing the program's goals and principles. A right sidebar features a "GET INVOLVED" section with a photo of people and a "KEEP INFORMED" section with a "SIGN UP" button and social media icons for Facebook and Twitter. The bottom of the page features a decorative graphic of a river flowing through green hills.



Susquehanna
Greenway

EXPLORE

CALENDAR

SUSQUEHANNA

STORIES

PHOTOS

Susquehanna
Greenway
Partnership

ABOUT SGP

OUR WORK

NEWS

RIVER TOWNS

PROGRAM

SUCCESS STORIES

INTERPRETIVE PLAN

RIVER TOWNS MANUAL

SIGNAGE

STRATEGIC ACTION

PLAN

GET INVOLVED

PUBLICATIONS

Home » Our Work » River Towns Program

River Towns Program

View Edit



River towns were centers of economic activity from earliest times. The essentials needed for community life were within walking distance—home, work and play were conveniently woven together. Today, these community relationships are still valued. People choose to visit and live in communities with stable economies, walkable and bike-friendly neighborhoods, nearby recreation, and with memorable town centers for business and social activity. The Susquehanna Greenway Partnership (SGP) holds a vision for a system-wide network of vibrant River Towns, actively connected to the Susquehanna and engaged with each other.

Become a Susquehanna Greenway River Town

This Program provides assistance to Susquehanna Greenway communities that seek to revitalize and celebrate their River connection, based on four key principles:

- Respect and work with the nature of the Susquehanna River
- Connect with the River (physically, visually, spiritually)
- Involve people with the River and with their River Town
- Recognize that economic development favors River Towns

These principles provide a foundation for

- Conducting a River Town Assessment
- Defining a Community Vision and Goals
- Developing an Action Plan for revitalization projects
- Identifying partners for implementation
- Collectively promoting the River Towns of the Susquehanna Greenway

The SGP provides assistance for this work through Regional Lead Organizations (RLOs) and Greenway Coordinators. They can work with your community leaders and local "Greening Teams" to develop a plan of action for your community's revitalization.

Sign In | Register | Forget My Password

GET INVOLVED



Join, renew or volunteer. Help us create sustainable communities.

KEEP INFORMED

Stay up to date by subscribing to our free e-mail newsletter!

SIGN UP



Benefits of River Connection

- ▣ Enhances property values.
- ▣ Attracts visitors to community, with consequent benefit to local economy.
- ▣ Improves aesthetic appeal & community identity.
- ▣ Encourages healthy lifestyle / exercise / recreation.
- ▣ Increases appreciation of local waterways and environment among residents.
- ▣ Increases appreciation for Lewisburg's historic and cultural connection to the river and the creek.
- ▣ Offers great “active” opportunity for families.

Stakeholders

- ▣ Borough of Lewisburg
- ▣ Union County and Northumberland County
- ▣ Property Owners (both adjacent and surrounding)
- ▣ Residents
- ▣ Tourists
- ▣ Susquehanna Valley Visitors' Bureau
- ▣ Buffalo Valley Recreational Authority
- ▣ Local canoe/kayak liveries
- ▣ PA Fish and Boat Commission
- ▣ Buffalo Creek Watershed Alliance
- ▣ PA DCNR
- ▣ Susquehanna Greenway Partnership
- ▣ Bucknell University

Existing and Proposed Activities

- ▣ Lewisburg Downtown Partnership Polar Bear Plunge
- ▣ Dinner by the River at First Presbyterian Church
- ▣ Spring riverbank clean up (new this year)
- ▣ Celebrate the Susquehanna block party (new)
- ▣ Possible fall in-river clean up
- ▣ Coordinated planning/visioning
- ▣ Others?

Riverbank Clean Up



Polar Bear Plunge



Copyright © 2010 Terry Moore

River Awareness Activities



Funding Options

- ▣ Grant applications can be completed and submitted to
 - PA Department of Conservation and Natural Resources (DCNR)
 - Chesapeake Gateways Network
 - PA Fish and Boat Commission
 - US Fish and Wildlife Service
 - Pennsylvania American Water
- ▣ Seek partnerships with local employers
- ▣ Promote partnerships with wellness programs

Discussion

- ▣ How do your organizations see their own connection to the river?
- ▣ Are there activities or projects you are already involved in that could be highlighted as part of this effort?
- ▣ Should we move forward with next steps to creating an official River Town Team and developing a River Town Plan?

Next Steps

- ▣ Launch public process.
- ▣ Publicize the effort to get more people involved.
- ▣ Conduct surveys to gauge public interest.
- ▣ Start pursuing grant funding.
- ▣ Coordinate existing efforts and assess need for other components.
- ▣ What's missing?

Conclusion

- ▣ Thanks for your time and consideration!
- ▣ Questions?

