

LEWISBURG RIVER TOWN



COMMUNITY PLANNING FORUM

Lewisburg Is a River Town, But

- ▣ The borough has a minimal connection to the river
- ▣ Views of the river from riverbank parks are limited
- ▣ Cultural events struggle to incorporate or acknowledge the river
- ▣ There is one access ramp which has inadequate parking and a poor quality launch point.
- ▣ The various existing parks along the river are under-developed and under-utilized
- ▣ Pedestrian infrastructure peters out before reaching many of the riverfront sites
- ▣ The town appears to take the river for granted at best and ignore it at worst.
- ▣ In spite of all this, we aspire to do better!

Background

- ▣ After initial resident interest in improving connections to the river, some initial ideas were explored.
- ▣ Borough Council recommended the LNC pursue becoming an official River Town.
- ▣ The LNC engaged a variety of community leaders and stakeholders and worked to obtain designation.
- ▣ The next step is to get a clearer picture of our community priorities as a River Town.
- ▣ Let's consider some of the many ideas already in the mix and then add some more – from you.

River Town Events

Polar Bear Plunge



Copyright © 2010 Terry Moore

River Clean Ups



River Awareness Activities

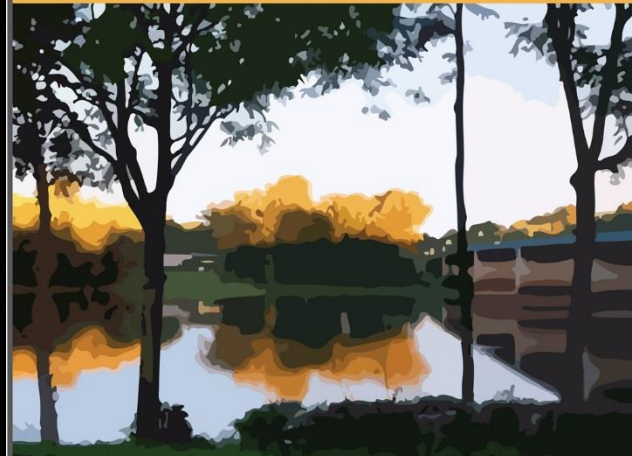


Picnic in the Park

5:30 to 7:30pm, Thursday, August 28

Soldiers Memorial Park

North Water Street, Lewisburg



BYOBlanket and pack a picnic dinner
or purchase one from vendors on site.

Get Together and Remember the River!

A Project of the Lewisburg River Town Team.

For more info, call 570.523.0114,
email elmstreet@dejazzd.com, or
visit lewisburgneighborhoods.org.



River Town Planning Ideas

Lewisburg's Riverfront



WOLFE FIELD



ST ANTHONY ST



MARIAH'S GARDEN



SOLDIERS PARK

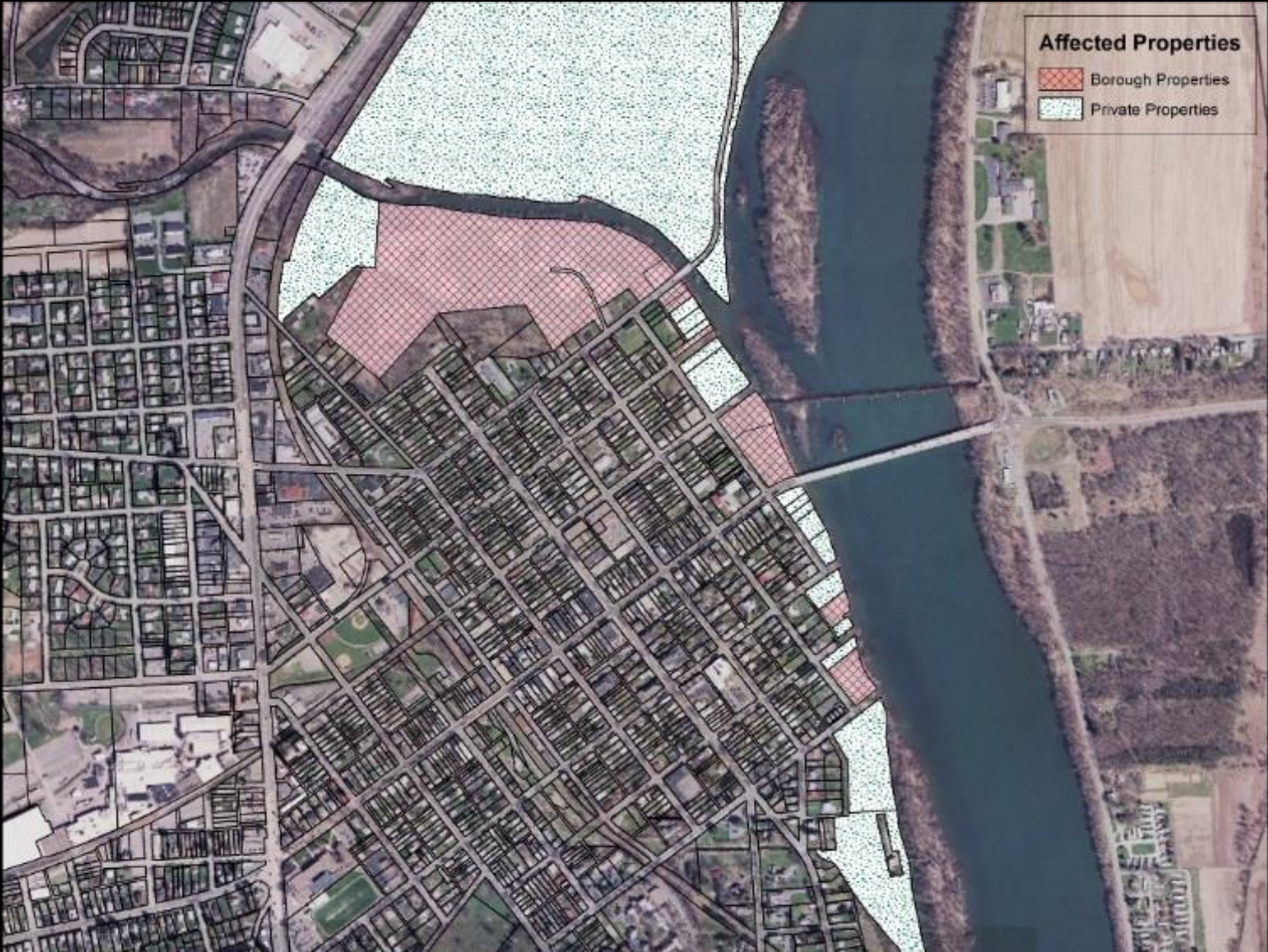


ST GEORGE ST

Lewisburg's Riverfront



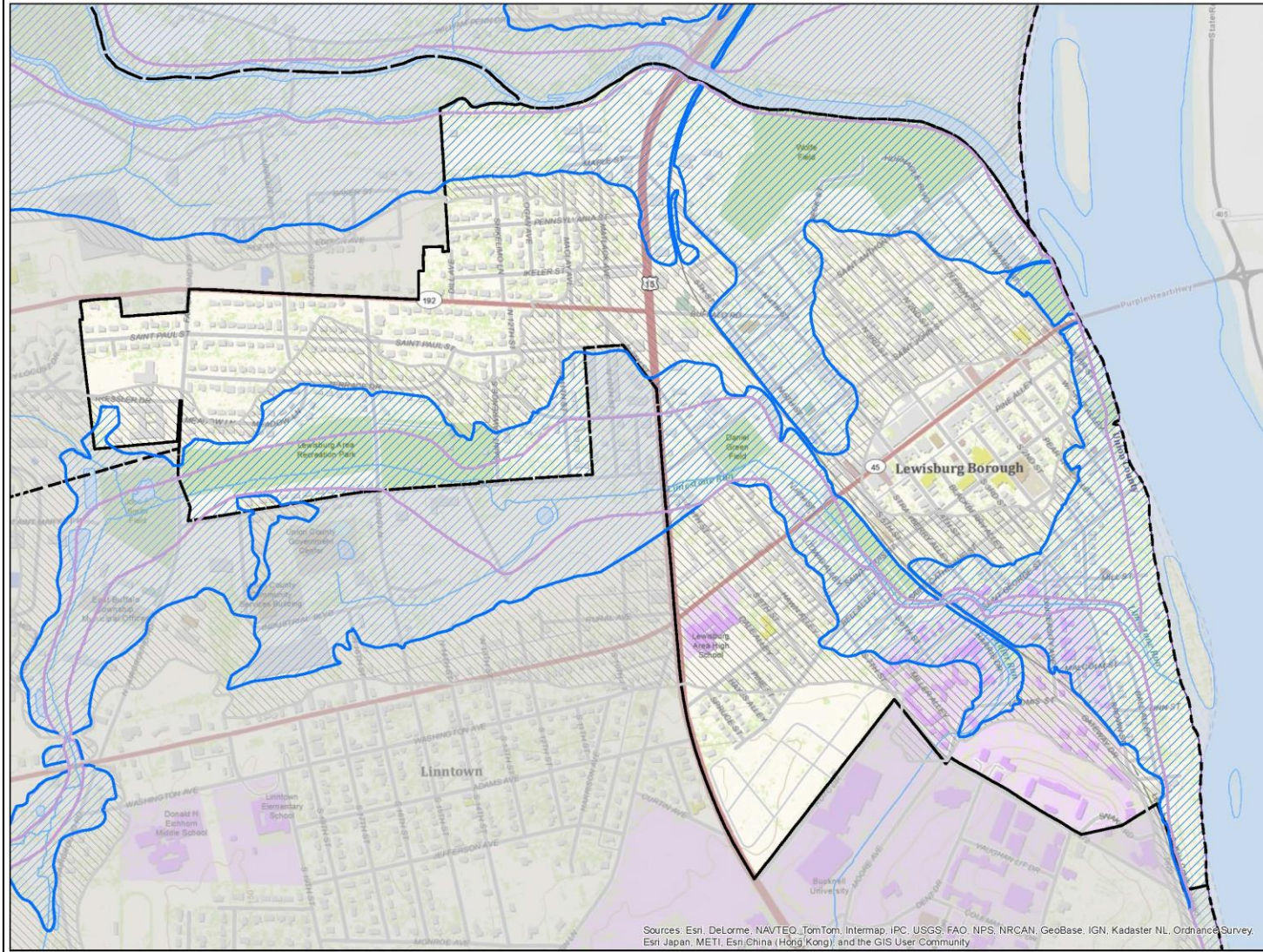
Properties Directly Adjacent to Sites



Potential Launch Sites



Flood Impact Task Force



LEWISBURG BOROUGH UNION COUNTY, PENNSYLVANIA

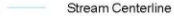
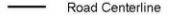


Number of Addressable Structures Per Flood Constraint

Total Number of addressable Structures in Lewisburg: 1649

Structures within Floodway: 67
Structures within 100 Year: 600
Structures within 500 Year: 1260
Structures Outside Flood Area: 389



One inch equals 700 feet
or
1:8400

-  Stream Centerline
-  Road Centerline
-  Water Body
-  Borough Boundary

Flood Designation

-  Floodway
-  100 year floodplain
-  500 year floodplain

**For Planning Purposes Only
Not For Engineering Use**

Prepared by:
Union County GIS Department
October 2013

Projection:
State Plane Coordinates
NAD 83

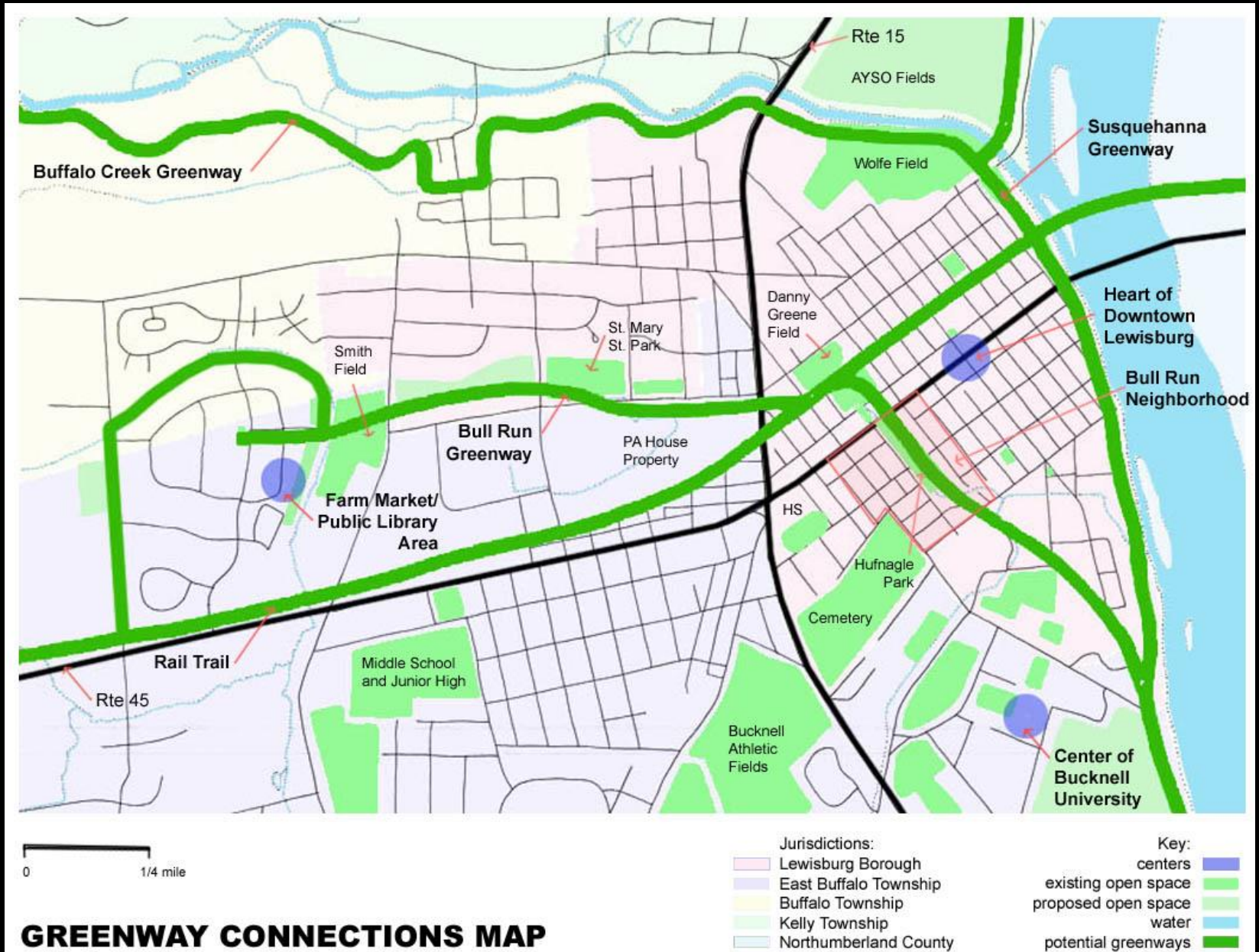
Source:
Union County GIS Data
Flood plan data derived from FEMA

Sources: Esri, DeLorme, NAVTEQ, TomTom, Intermap, IPC, USGS, FAO, NPS, NRCAN, GeoBase, IGN, Kadaster NL, Ordnance Survey, Esri Japan, METI, Esri China (Hong Kong), and the GIS User Community

Flood Impact Task Force



Bull Run Greenway



Bull Run Greenway



6th STREET/BULL RUN GREENWAY
Project Area Map

- KEY**
- Project boundary
 - Bull Run Creek
 - Rail Trail - Phase II
 - Susquehanna River
 - Bull Run Neighborhood

Lewisburg, PA
April 2014
DCNR Grant Package

Bucknell Student Project

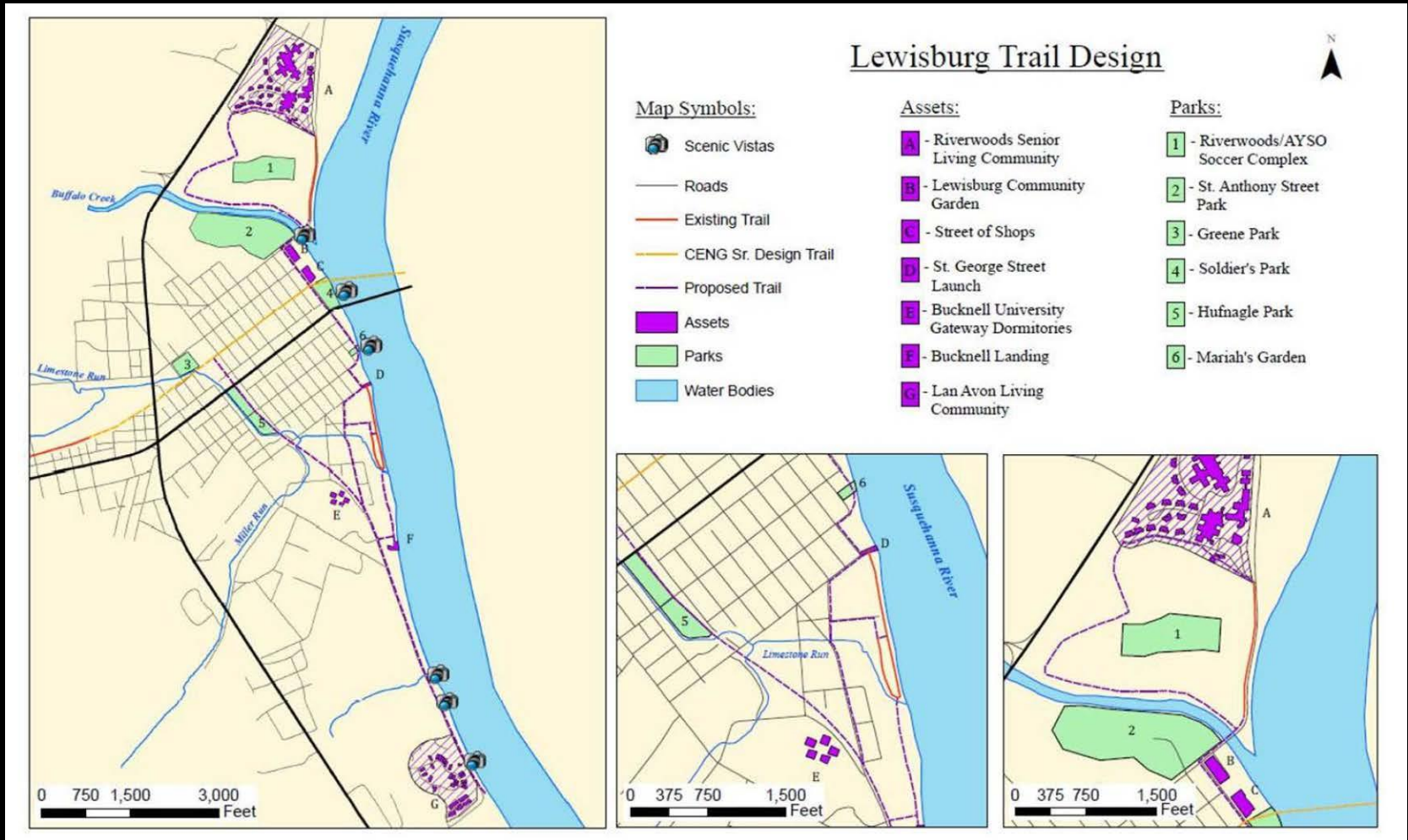
Spring 2013



BUCKNELL
UNIVERSITY

IMPROVING RIVER ACCESS IN LEWISBURG, PA

Bucknell Student Project



Rail Trail Bridge Concepts



Rt 15 Corridor Study

Figure 4-2 Corridor Improvement Framework Plan

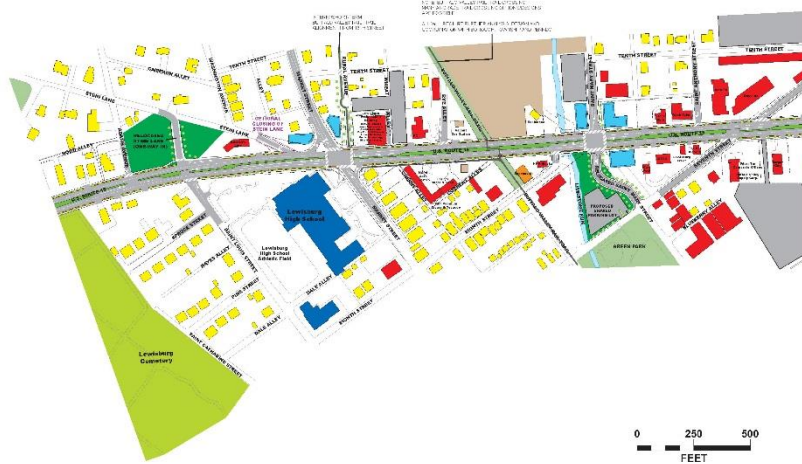
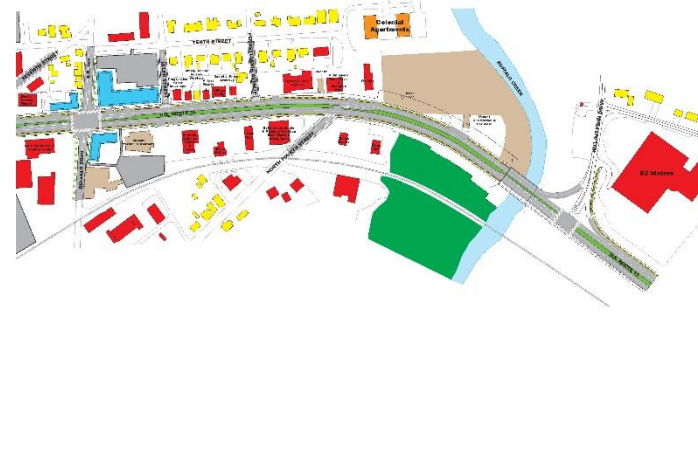


Figure 4-2 Corridor Improvement Framework Plan



U.S. 15 Smart Transportation Corridor Improvement Plan

LEGEND

EXISTING LAND USE

Agricultural	Institutional
Single-Family Residential	Open Space
Multi-Family Residential	Recreational
Commercial	Vacant
Caseweb	

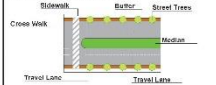
EXISTING FEATURES

Legal Right of Way	Recreational Trail
Edge of Pavement	Structure
Topography	Hydrology

PROPOSED FEATURES

Mixed-Use Building
Shared Parking Lot
Ramped Roadway

PROPOSED IMPROVEMENTS



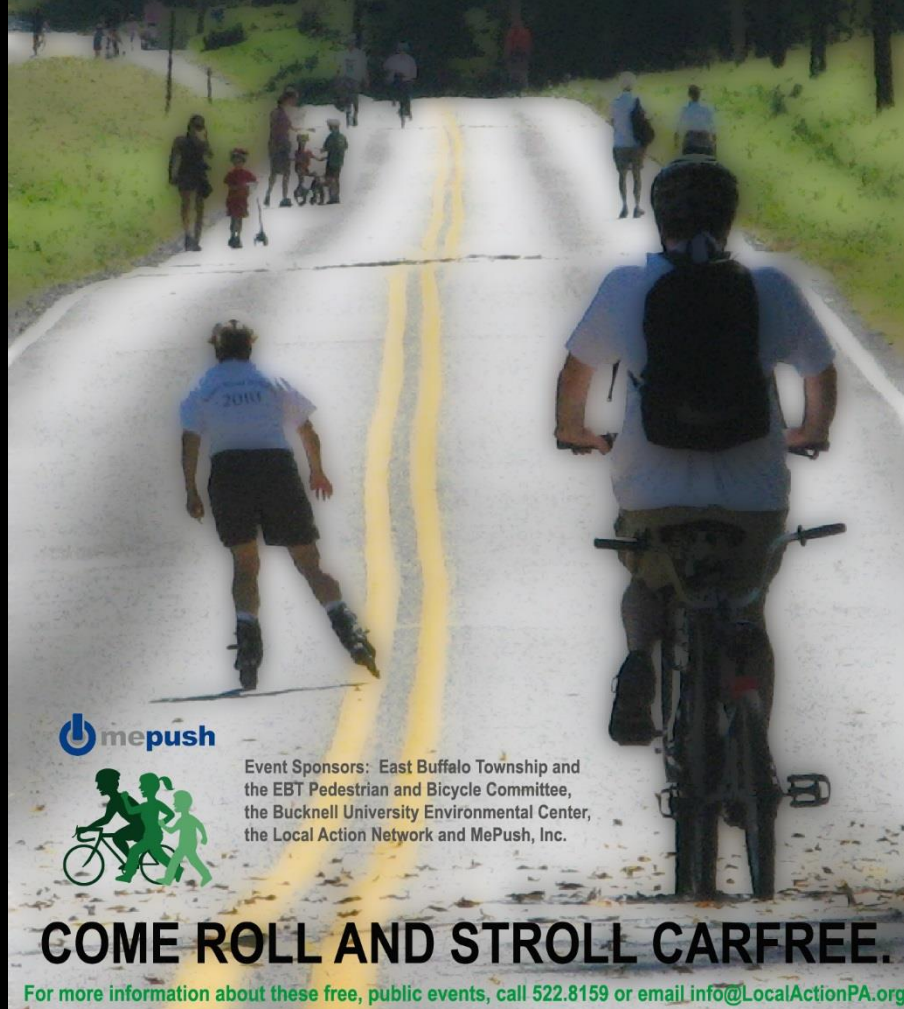
River Road Holiday

RIVER ROAD HOLIDAY 2011

2 SUNDAYS: APRIL 3 and MAY 1, from 1 to 5pm

on River Road, south of Lewisburg, from 7th Street to South Lan Avon Drive.

Rain dates one week later. Stay tuned to WKOK for event status in case of bad weather.



Event Sponsors: East Buffalo Township and the EBT Pedestrian and Bicycle Committee, the Bucknell University Environmental Center, the Local Action Network and MePush, Inc.

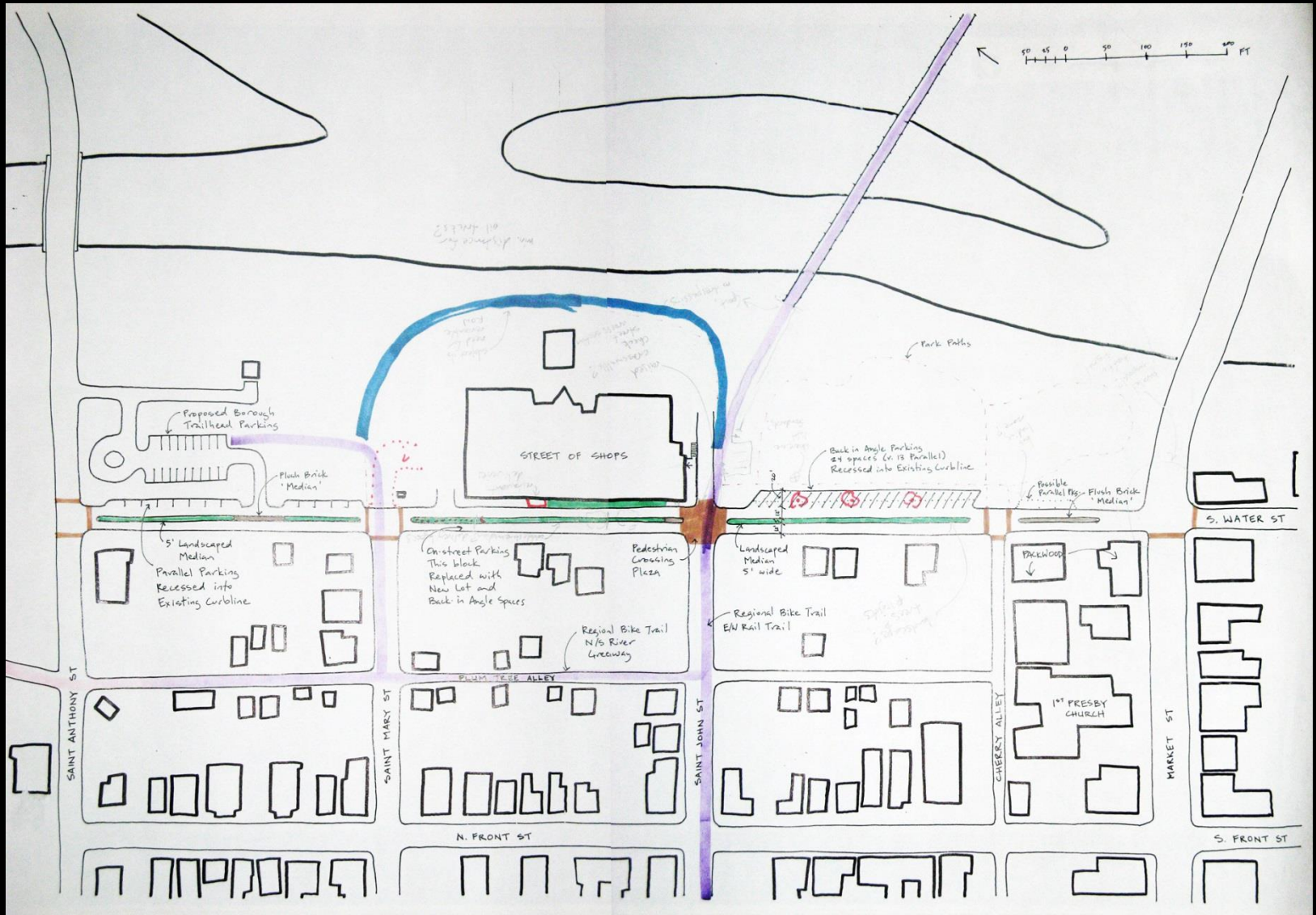
COME ROLL AND STROLL CARFREE.

For more information about these free, public events, call 522.8159 or email info@LocalActionPA.org

Riverwoods Trail Proposal



North Water Street Proposal



Community Garden



Wolfe Field???



Benefits of River Connection

- ▣ Enhances property values.
- ▣ Attracts visitors to community, with consequent benefit to local economy.
- ▣ Improves aesthetic appeal & community identity.
- ▣ Encourages healthy lifestyle / exercise / recreation.
- ▣ Increases appreciation of local waterways and environment among residents.
- ▣ Increases appreciation for Lewisburg's historic and cultural connection to the river and the creek.
- ▣ Offers great “active” opportunity for families.

Stakeholders

- ▣ Borough of Lewisburg
- ▣ Union County and Northumberland County
- ▣ Adjacent Municipalities (Kelly and East Buffalo Twps)
- ▣ Property Owners (both adjacent and surrounding)
- ▣ Riverwoods
- ▣ Residents
- ▣ Tourists
- ▣ Susquehanna Valley Visitors' Bureau
- ▣ Buffalo Valley Recreational Authority
- ▣ Local canoe/kayak liveries
- ▣ PA Fish and Boat Commission
- ▣ Linn Conservancy/ Buffalo Creek Watershed Alliance
- ▣ PA DCNR
- ▣ Susquehanna Greenway Partnership
- ▣ Bucknell University

Existing and Proposed Activities

- ▣ Lewisburg Downtown Partnership Polar Bear Plunge
- ▣ Dinner by the River at First Presbyterian Church
- ▣ Spring riverbank clean up
- ▣ Picnic in the Park
- ▣ Fall in-river clean up
- ▣ Art installations celebrating the river site
- ▣ Fun floats

Next Steps

- ▣ Conduct surveys to gauge public interest.
- ▣ Start pursuing grant funding.
- ▣ Coordinate existing efforts and assess need for other components.
- ▣ What's missing?

Conclusion

- ▣ Thanks for your time and consideration!
- ▣ Questions?

